



Kia tika, kia pono, kia aroha - doing what is right with integrity and empathy

Centre for Ecological Technology Solutions

Ecological Engineering/ Pūhanga rauropi solves problems for societies and for the environment by designing solutions based on the interdependency of people and their ecosystems. www.celts.org.nz

OUR VISION

Our implemented design solutions make a measurable and sustained impact in reversing water quality pollution within a generation.

Research Expertise

CELTS focuses on creating design solutions that are holistic, valorise waste resources and are regenerative so align to a circular economy. Most research projects centre around Clean Water Technologies (CWT).

THEMES INCLUDE:



3D Printing Waste Materials for Novel Wastewater Treatment Media



Fish Passages and Built Barriers



Green Roof and Green Wall Systems



Nutrient Treatment using Waste Seashells



Stormwater Modelling



Storminator™ Technology



Lifecycle Assessment Modelling



Engineering Education





2024

Research Members

CELTS was founded by Associate Professor Aisling (Ash) O'Sullivan in 2006 to fill the research gap in Ecological Engineering within Aotearoa New Zealand. CELTS is part of the Department of Civil and Natural Resources Engineering / Pūhanga Metarahi me te Rawa Taiao at the University of Canterbury (UC). We collaborate with industry, iwi and councils in designing and implementing our research ventures.

POST-DOC FELLOW



Jakub Maculewicz

ADJUNCT RESEARCHER



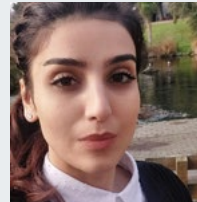
Dr David Painter

RESEARCH ASSISTANT



Connor Moss

PHD CANDIDATES



Sepideh Ansari



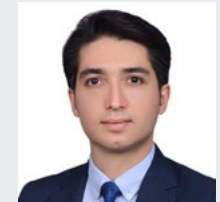
Honor Columbus



Moeen Gholami



Jéssika Souza de Carvalho



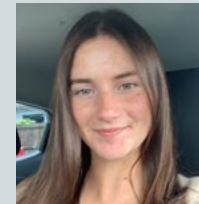
Iman Arezi

MASTERS CANDIDATE

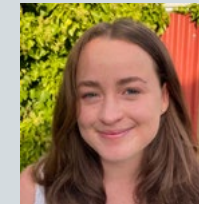


Harrison Keesing

HONOURS CANDIDATES



Zelda Boyd



Michala Managh

CELTS LEADER



Prof. Dr Aisling O'Sullivan

MĀORI PROJECT COORDINATOR



Amber Moke

