



Think Global

Global Opportunities
at UC Business School

International Experiences

International Experiences Overseas

- Global Exchange
- Global Short Course
- Study Tour

International Experiences on-campus

- Tūhono Programme
- X-culture
- Virtual Internships

UC Business School CQ Certificate

[International opportunities](#) | [International](#) | [UC Business School](#) | [University of Canterbury](#)



What is an exchange?

- Allows UC students to study for **one** or **two** semesters at an overseas university
- The courses taken at **an international partner university** can be credited towards your UC degree, even 300-level courses.
- In many cases the exchange can be arranged so that you can finish your BCom in the usual 3 years despite spending 1 or 2 semesters of it overseas.
- You will **remain a UC student** and **pay UC tuition** during your exchange - You will not pay tuition at the partner university.
- All Business Exchange partners offer courses taught in English. (prior language background is not required)



Benefits of Exchange

- Study at one of the most prestigious universities for teaching and research worldwide!
- Diversify your degree with courses not offered at UC
- Being exposed to different teaching styles that will enhance your learning
- Learn a new language or improve your language skills



Benefits of Exchange

- Great to have on your CV – awesome way to show future employers that you can be flexible, take on a challenge, integrate and build networks.
- The perfect way to experience a different culture.
- Opportunity to build a global network, meet like-minded people and make life-long friends.
- Life-changing experience that will benefit your personal : you will gain confidence, broaden your horizon, become more adaptable, learn about you and professional development self.
- Travel opportunities!



Am I eligible?

- You need a **B average** or higher to be considered for exchange (some exceptions apply)
- Need to apply **one year in advance**



When should I go?

- The earliest time you can go is in the S2 of your Y2 study at UC
- You can also go on your 3rd year
- International students are not advised to go on exchange in the final semester of your degree.
- **Plan as early as possible and apply one year in advance!**



When should I go? e.g. ECON & FINC majors

Year 1 **Economics**

ACCT 102	ECON 104 or 199	ECON 105	INFO 123	MGMT 100	STAT 101	100 level (1)	100 level
----------	-----------------	----------	----------	----------	----------	---------------	-----------

Year 2

BSNS 201	ECON 206	ECON 207	ECON 208	200 level - 2 courses	200 level	100 level
----------	----------	----------	----------	-----------------------	-----------	-----------

Year 3

ECON 300 level - 4 courses	300 level - 2 courses	200 level - 2 courses	BSNS 299
----------------------------	-----------------------	-----------------------	----------

Year 1 **Finance**

ACCT 102	ECON 104 or 105 or 199	INFO 123	MATH 101 or 102 or 199 (1)	MGMT 100	STAT 101	100 level	100 level
----------	------------------------	----------	----------------------------	----------	----------	-----------	-----------

Year 2

BSNS 201	FINC 201	FINC 203	200 level - 3 courses	200 level	100 level
----------	----------	----------	-----------------------	-----------	-----------

Year 3

2 courses from FINC 301 or 311 or 312	FINC 300 level - 2 courses	300 level - 2 courses	200 level - 2 courses	BSNS 299
---------------------------------------	----------------------------	-----------------------	-----------------------	----------

- 300-level requirements are flexible
- Either semester of the 3rd year is your best bet as the most interesting courses are offered at the 3rd year level
- S1 of Y3 is slightly better in the sense that you can make up some holes potentially caused by your exchange in S2 of Y3
- *You CAN go during the 2nd semester of 2nd year as well*

When should I go? Double major/degree

- If you are a double degree/double major student, you will have required 2nd year courses in both semesters. You will need these courses to be able to continue to third year.
- If you go during S2 of Y2, and if you fail to be able to take the intermediate courses that you need for third year, your degree may be delayed by a whole year
- **Y3 would be an ideal timing for double degree/major students**
- **If you are doing a double degree in commerce and law, you may consider the partner university which offers both commerce and law courses.**



When should I go?

Conclusion

- Find a semester which gives you the most flexibility in course selection
- Most of our partners start their academic year in September (our second semester). This is a good time to go on exchange because most partners arrange an extensive orientation programme then.
- **Most students are able to graduate within the normal length** of their qualification despite going on exchange if they plan their partner and studies carefully
- Some **take five instead of four courses when they return** to make up for any required courses that they could not take while on exchange



How much will it cost?

- It is the **SAME** fee as studying at UC
- Your tuition fee, levy, and other non-tuition fees applicable are paid directly to UC and you do not incur any international tuition fees while you are on exchange
- Eligible for StudyLink
- The cost of living while you are on exchange is depending on the destination that you chose



Am I eligible for any financial support?

- **UC Outbound Exchange Award 2023 (NZD \$2,000)**

Up to 100 Exchange Awards are available for students applying for 2023 exchange

- **UC Business School Global Experience Award for Māori and Pacific students (NZD \$1,000)**

The award applies to students that whakapapa to iwi Māori or are of Pacific/Pasifika descent. To be eligible, students must enrolled have completed at least one semester or study towards Bcom degree (terms and conditions apply).



Am I eligible for any financial support?

Prime Minister's Scholarships for Asia (PMSA) and Prime Minister's Scholarship for Latin America (PMSLA)

Funded by the NZ Government and administered by Education New Zealand. Only available for students who undertake exchange in either Asian or Latin America

- Individual Scholarship applications now open till 4 September 2023
- To apply for PMSA/PMSLA, you need to be at least 18 years old and are a New Zealand citizen or permanent resident.
- You can be awarded both a group scholarship and an individual scholarship once. You may not be awarded twice for either.
- If you are awarded a scholarship, you must start your programme within 20 months of your award. (e.g. if you are awarded in Oct 2023, you will have till mid 2025 to commence your exchange study).
- What is covered for an exchange study? – return economy flights, contribution to living and accommodation costs, travel and medical insurance, visa fee. Expected amount: one semester exchange (18 weeks) - \$8,460 in Asia, \$6,840 in Latin America.



Where can a BCom student go?

University wide we have over 60 partners and over 30 partners are hand picked for business students

- All of them have either all courses offered in English or there is a sufficient number of such courses to choose from
- All allow our students to take unlimited commerce courses (note: some of the university-wide partners restrict the commerce points that our students can enrol for)



Exchange Partners in Asia

[Huazhong University of Science and Technology](#)

[Tsinghua University](#)


[University of Nottingham Ningbo](#)

[University of Hong Kong](#)

[Akita International University](#)

[Singapore Management University](#)

[Yonsei University](#) *(open to all UC students)*

China 
(open to all UC students)

Japan 

Singapore 

South Korea 



University of Hong Kong

Hong Kong, China

- Hong Kong, ranked **#10 in QS's Best Student Cities 2019**, offers an exciting experience for students.
- HKU campus is well-connected to the CBD, providing students with an opportunity to interact with industry leaders.
- Top university in the world - **#26** in the world, **#4** in Asia
- All courses are taught in English.
- In addition to its strong academic programmes, HKU also offers a range of extra-curricular activities and clubs including entrepreneurship and innovation clubs and social sports.
- On-campus accommodation available (very competitive). The availability of accommodation is usually higher in Spring semester than in Fall semester.



University of Hong Kong

Hong Kong, China

- HKU Business School welcomes over 400 exchange students from over 35 countries every academic year
- Courses in **Accounting (ACCA accredited)**, **Economics**, **Finance**, **Innovation**, **Information System**, **Marketing**, **Management**, **Strategy**, etc.

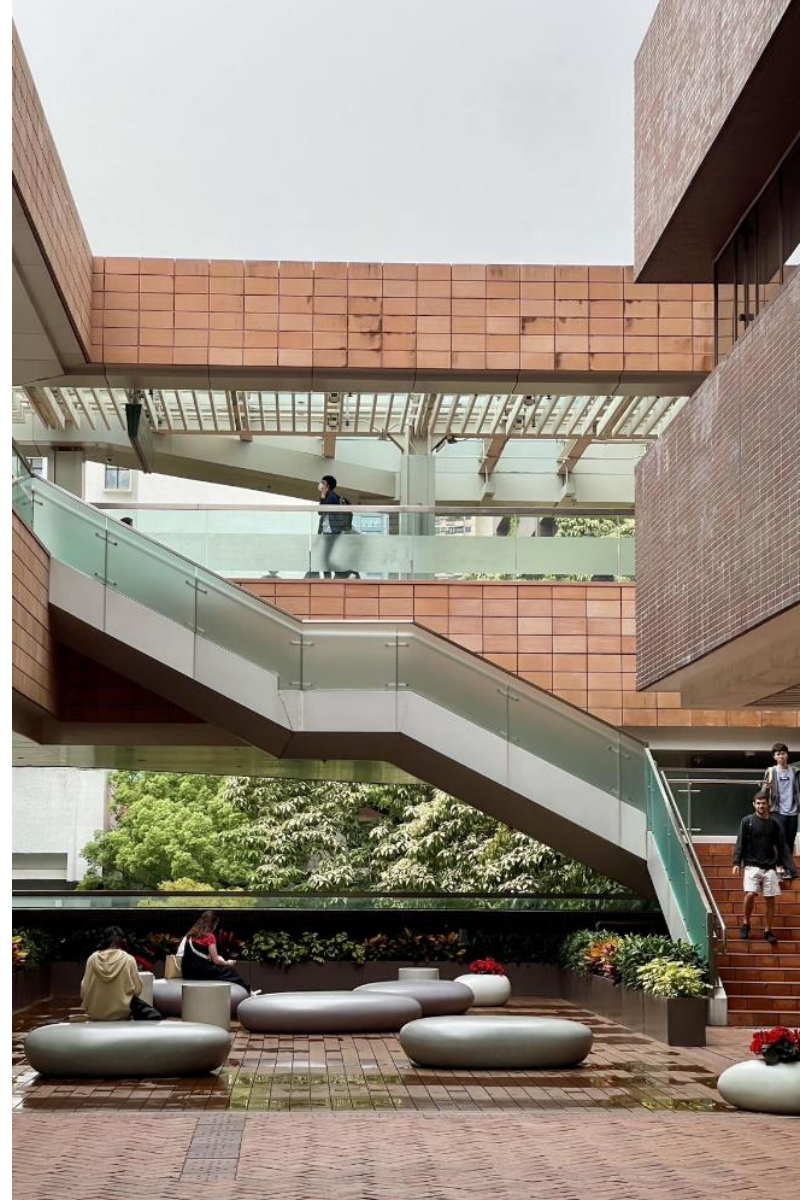


University of Hong Kong

Hong Kong, China

ACADEMIC INFORMATION

Semester Dates	Fall semester: early Sep – late Dec Spring semester: mid Jan – mid May
Class Format and Style	Class size: 50-250 students
Course Load	Students are required to take 24-30 credits (5 credits per course in general) for each semester. Students typically enrol in 5 to 6 courses per semester.
Course Assessment	Including, but not limited to: lecture and tutorial participation, assignments, mid-term tests, group projects, and final examinations
Credit Equivalency	1 HKU credit = 2 UC points



Tsinghua University

Beijing, China

- located in northwest Beijing on the site of the former imperial gardens of the Qing dynasty and is surrounded by a number of historical sites.
- As one of China's most prestigious and influential universities, Tsinghua is committed to cultivating **global citizens** who will thrive in today's world and become tomorrow's leaders.
- Top university in the world - **#25** in the world, **#3** in Asia, **Top 30** in the world for Accounting and Finance, Economics, Business and Management studies.
- more than 4,000 international students from over 130 countries
- A good number of courses taught in English (Accounting, **Economics, Finance**, and Management)
- On-campus accommodation available

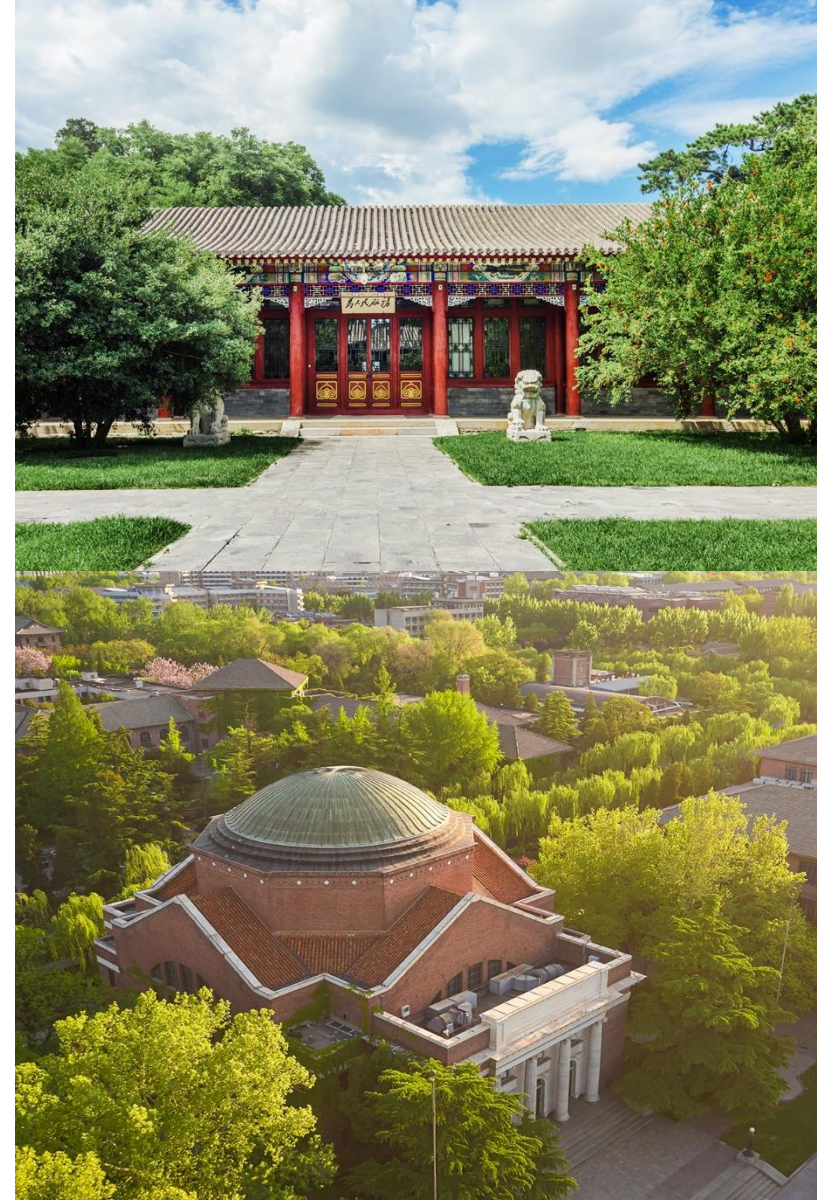


Tsinghua University

Beijing, China

ACADEMIC INFORMATION

Semester Dates	Fall semester: Mid Sep - late Jan Spring semester: End of Feb – end of June
Class Format and Style	Class size: 50 - 100 students
Course Load	Students can take 12 - 15 credits (2 – 3 credits per course in general) for each semester. Students typically enrol in 5 to 6 courses per semester.
Course Assessment	Including, but not limited to: lecture and tutorial participation, assignments, mid-term tests, group projects, and final examinations
Credit Equivalency	1 Tsinghua credit = 5 UC points





Huazhong University of Science and Technology

Wuhan, China

- As the capital city of Hubei Province, Wuhan is the largest city and most populous city in central China.
- Historically served as a busy city port for commerce and trading.
- HUST has one of the largest university campus in China – three Metro stops across the campus
- **Top 10** university in China and known as China's MIT
- “University in the forest” with a total area of 1,160 acres with 72% greenery coverage
- **International Economics and Business programme** is fully taught in English.
- On-campus accommodation available (single, double, and suite rooms available).



Huazhong University of Science and Technology

Wuhan, China

ACADEMIC INFORMATION

Semester Dates	Fall semester: early Sep – early Jan Spring semester: late Feb – end of June
Course Load	Students are required to take 24-30 credits (5 credits per course in general) for each semester. Students typically enrol in 5 to 6 courses per semester.
Course Assessment	Including, but not limited to: lecture and tutorial participation, assignments, mid-term tests, group projects, and final examinations
Credit Equivalency	1 HUST credit = 3 UC points





University of Nottingham Ningbo

Ningbo, China

- Ningbo city is in the costal province of Zhejiang – 1 hr high-speed train to Shanghai
- Ningbo is a rapidly growing city. Ranked 7th by Forbes list of 'the top cities for business in China', it is a thriving blend of enterprise, culture, education, tradition and entertainment.
- **An overseas campus of the University of Nottingham.** The first Sino-foreign (joint education) university launched in China in 2004.
- All courses taught in English, covering **Accounting (ACCA accredited), Economics, Finance, International Business, Entrepreneurship, Management, Marketing**
- On-campus accommodation is available
- Global Ambassador Scholarship is available for exchange students (RMB5,000 – approx. \$1,100 nzd)



University of Nottingham Ningbo

Ningbo, China

ACADEMIC INFORMATION

Semester Dates	Fall semester: early Sep – early Jan Spring semester: mid Feb – mid June
Class Format and Style	Small class size
Course Load	Average full-time workload is 60 Nottingham credits (50 credits minimum). Modules are normally worth 10 – 20 credits each.
Course Assessment	lecture and tutorial participation, assignments, mid-term tests, group projects, and final examinations
Credit Equivalency	1 Nottingham credit = 1 UC points





Akita International University

Japan

- A small city of approximately 300,000, it is known for its stunning natural environment, wide variety of folk culture and performances, and its warm, welcoming people.
- 4 hours via bullet train or 1 hour flight from Tokyo
- Small international university founded in 2004. All courses taught in English
- Comprehensive programme of Japanese language studies available
- No prior knowledge of Japanese is required
- Courses in **International Business, Marketing, Management,, Economics, Finance**, Political Science, Japan studies, Arts, etc.
- On-campus accommodation available



Akita International University

Japan

ACADEMIC INFORMATION

Semester Dates	Fall semester: 1 Sep – 23 Dec (works well for us) Spring semester: 1 Apr – 31 July
Class Format and Style	Small interactive classes comprising approx. 18 students
Course Load	Minimum: 12 AIU credits; Maximum: 18 AIU credits; Standard: 15 credits. Most courses are 3 credits so students will be taking 5 courses per semester.
Class Hours and Credits	One class hour is 50 minutes and students are expected to study on their own for two hours per class hour. One AIU credit reflects 15 lecture hours
Credit Equivalency	3 AIU credits = 12 UC points



‘I got to meet people from all over the world and made new friends. It was an amazing travel experience that I got to do while still studying. It’s a great opportunity to improve on or learn a new language.

I really enjoyed campus life at Akita, there’s a lot of different clubs you can join, and the library is amazing. The campus is surrounded by a forest and park so there are a lot of different adventures you can go on.’

Kate Berry
International Business major
Exchange to AIU, Japan



Singapore Management University

- Singapore is an **ideal entry point into Asia** for students without prior experience in the region.
- SMU located in the heart of **Singapore's central business district**
- A highly-ranked **private business school, #36** in the world in Business and Management Studies
- Courses in **Accounting (ACCA accredited), Economics, Finance, Information Systems, Management, Marketing, Law and Social Sciences**
- All courses are taught in English
- SMU is an entire university dedicated to business and management, it offers many unique and specialized courses
- No on-campus accommodation available – SMU will provide the list of accommodation options pre-departure



Singapore Management University

ACADEMIC INFORMATION

Semester Dates	Fall semester: Mid Aug – Early Dec Spring semester: Early Jan – Mid Apr
Class Format and Style	Interactive seminar-style comprising 35 to 45 students
Course Load	Minimum: 2.0 SMU credits; Maximum: 4.0 SMU credits
Class Hours and Credits	1 SMU credit consists of 39 contact hours per term
Credit Equivalency	1 SMU credit = 1 UC credit



'I really loved the academic experience in Singapore. The classrooms were limited to 50 students and were a lot more interactive compared to what I had been used to, which was really neat.

Campus life was wicked. SMU is right in the middle of the city which made adventuring after Uni really easy. The city is very international and has English as a main language, so I had no trouble fitting in at all.'

Patrick Williams

Finance and Accounting

Exchange to SMU, Singapore



Yonsei University

Seoul, South Korea

- Founded in 1885, it is **one of the oldest universities** in South Korea and widely regarded as the **top private university** in the country
- Located in a spacious, quiet, and well-wooded environment near a mountain in the centre of Seoul's metropolitan area
- Ranked **#73** in the world and **#1** Asian private university (QS, 2023)
- Over 800 courses offered in English over various disciplines
- Comprehensive programme of Korean language studies available
- No prior knowledge of Korean is required
- **Business courses are in high demand**, so a maximum of 4 courses are allowed. However, students can take business-related courses offered by the Department of Economics (Course code: ECO) in addition to the maximum of 4 BIZ course.
- Courses in **Accounting, Economics, Finance, Marketing, Management**, etc.



Yonsei University

Seoul, South Korea

ACADEMIC INFORMATION

Semester Dates	Fall semester: early Sep – late Dec Spring semester: early Mar – late June
Course Load	Minimum: 9 Yonsei credits; Maximum: 18 Yonsei credits. Most Yonsei courses are 3 credits each, so students need to do 5 courses per semester.
Class Hours and Credits	1 credit hour of course load equals to minimum 15 hours of class per semester. Courses such as lab, practice, athletic and other courses designated by Yonsei University are credited 1 credit hour per 30 hours of class a semester.
Credit Equivalency	3 Yonsei credits = 12 UC points



Exchange Partners in Australia

[Australian National University](#)

[Queensland University of Technology](#)

[University of Adelaide](#)

[University of Wollongong](#)

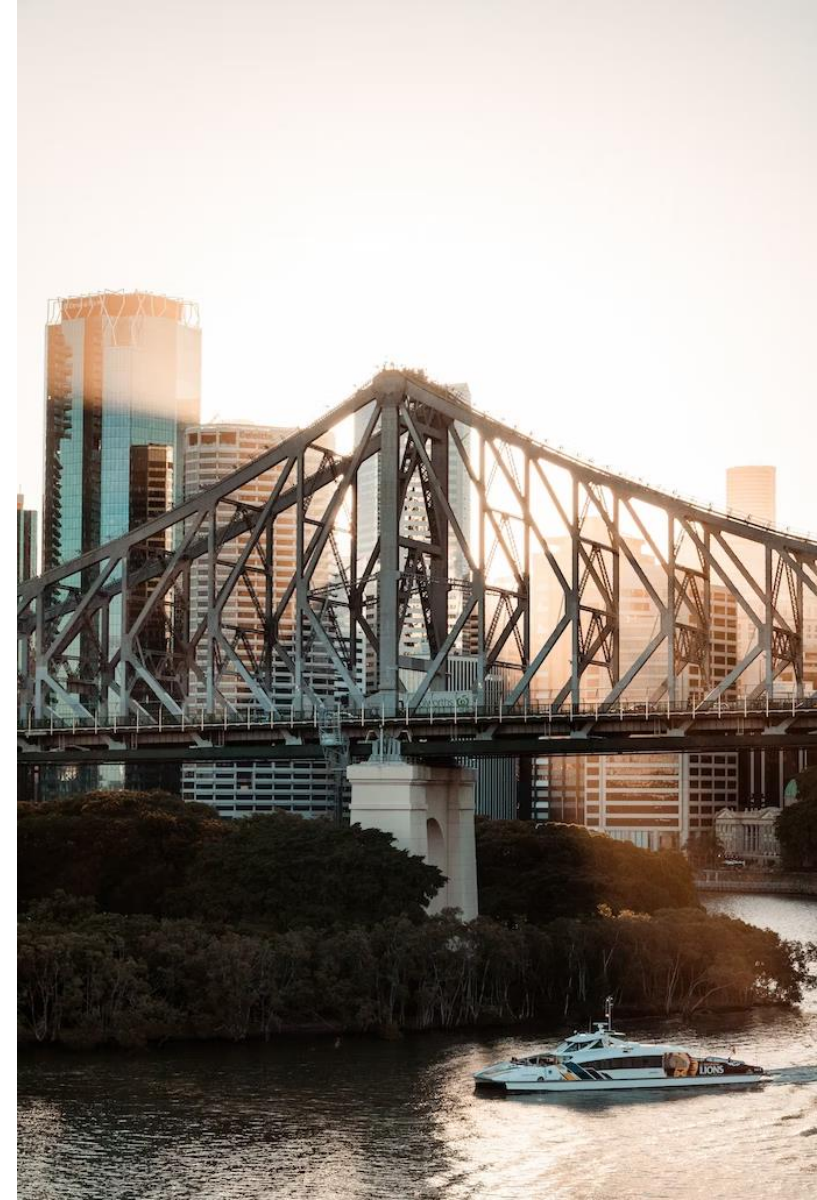
Australia
(open to all UC
students)



Queensland University of Technology

Brisbane, Australia

- Located in Brisbane – a warm and welcoming city with a relaxed and subtropical outdoor lifestyle.
- QUT is ranked in the top 25 best student cities in the world.
- A city-campus with a big Brisbane Botanic Garden right outside the building!
- First business school in Australia with triple crown accreditation.
- Courses in **Accounting (CA Pathway), Economics, Entrepreneurship, Finance, HRM, International Business, Management, and Marketing.**
- Estimated living cost: AU\$1,600 - \$3,000 per month (NZ\$1,700 – NZ\$3,200).
- On-campus accommodation available. QUT Accommodation Services team is able to help finding suitable place.



Queensland University of Technology

Brisbane, Australia

ACADEMIC INFORMATION

Semester Dates	1 st semester: February – June 2 nd semester: July – November
Credit Equivalency	12 unit = 15 UC points






University of Adelaide

Adelaide, Australia

- Sister city to Christchurch!
- City campus with a green environment around with a park just opposite the campus.
- Heritage buildings with modern facilities inside.
- A lot of student accommodation with walking distance to the campus as well as supermarket and other shops in the city centre.
- Has Centre of Entrepreneurship (ThinLab) which students are able to join the challenges and their summer start up
- Courses in **Accounting (CA Pathway), Economics, Management, and Marketing.**
- Estimated living cost: AU\$2,500 (NZ\$2,700) per month.
- Dedicated accommodation Service team available to assist exchange students.



Exchange Partners in Europe

Aalto University School of Economics	Finland	
Audencia Business School	France	
Sciences Po, Paris <i>(open to all UC students)</i>		
Católica-Lisbon School of Business and Economics	Portugal	
Copenhagen Business School	Denmark	
University of Antwerp	Belgium	
ZHAW School of Management and Law	Switzerland	



Exchange Partners in Europe

Radboud University <i>(also open to law students)</i>	Netherlands 
Tilburg University <i>(also open to law students)</i>	
WU – Vienna University of Economics and Business	Austria 
WHU - Otto Beisheim School of Management	Germany 
Pompeu Fabra University	Spain 
University of Navarra	
Lund University	Sweden 



Aalto University

Espoo, Finland

- Finland is ranked #1 happiest country in the world and #2 in gender equality
- Aalto located in Espoo, within a few minutes public transport from Helsinki, the capital of Finland
- Campus combines business with engineering and arts – perfect for entrepreneurial pursuits
- The **largest and top-ranking** business school in Finland
- Triple-crown accreditation: AACSB, AMBA, and EQUIS
- Courses in **Accounting, Economics, Finance, IS, Marketing, Management**
- Many courses taught in English. No prior knowledge of Finnish is required.
- 2 x €1,000 scholarship available for 2024 exchange students.



Aalto University

Espoo, Finland

ACADEMIC INFORMATION

Semester Dates	Fall Semester: September – December Spring Semester: January - May
Class Format Style	Attendance is mandatory.
Course Load	Standard course load is 30 ECTS per semester.
Credit hours	6 ECTS credit stands for an estimated workload of 45 contact hours including Exams.
Credit Equivalency	1 ECTS = 2 UC Points



Audencia Business School

Nantes, France

- Located in the west of France, known for its green spaces, architecture, and environmentally friendly place. Also a **student-friendly city!**
- Thriving modern city with a historic city centre – 15 minutes away from the campus
- **2 hours train away to Paris**
- Courses in **Finance, Marketing, and Management**
- Courses taught in English
- Estimated living expenses: approximately €720 - €1135 (\$1300 - \$2000 NZD) per month
- No on-campus housing (available: rooms in student residence, homestay with local families, private apartment, studios, and flats.)



Audencia Business School

Nantes, France

ACADEMIC INFORMATION

Semester Dates	Fall Semester: September – December Spring Semester: January - May
Class Format Style	
Course Load	Standard course load is 30 ECTS per semester
Credit hours	1 ECTS credit stands for an estimated workload of 24 – 30 hours
Credit Equivalency	1 ECTS = 2 UC Points



Catolica Lisbon School of Business and Economics

Lisbon, Portugal

- Lisbon is the second oldest capital city in Europe, after Athens.
- A city with rich history and cultural heritage.
- Population approximately 3 million.
- The school has triple crown accreditation – EQUIS, AMBA, and AACSB.
- Portuguese course available for exchange students to take (6 ECTS, 4.5 hours a week for €200 per semester).
- Living cost approximately €750 - €900 per month (\$1300 - \$1600 per month).
- Courses in Finance, Economics, Marketing, and Management.



Catolica Lisbon School of Business and Economics

Lisbon, Portugal

ACADEMIC INFORMATION

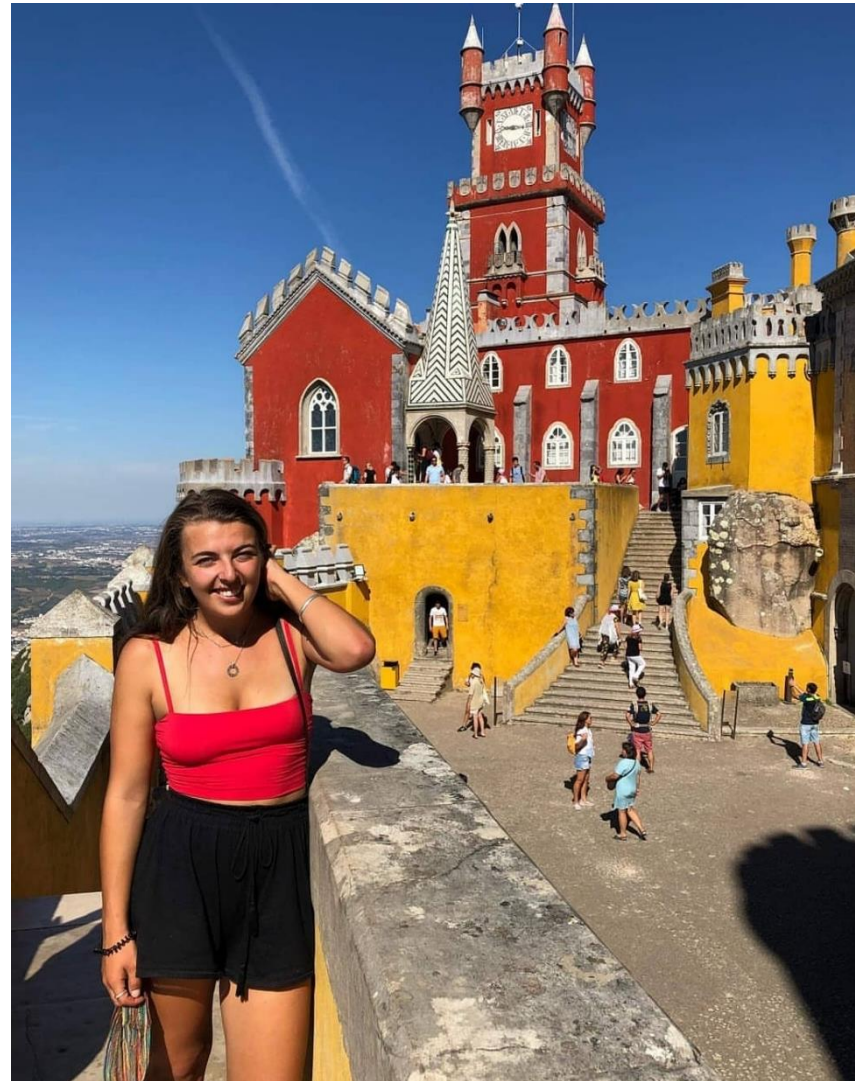
Semester Dates	Fall Semester: September – December Spring Semester: January - May
Class Format Style	Interactive learning environment. Attendance is mandatory.
Course Load	Standard course load is 30 ECTS per semester. Maximum workload is 33 ECTS
Course Assessment	Questionnaires, mid-term tests, group assignments, and final exams
Credit Equivalency	1 ECTS = 2 UC Points



‘One of the things that I liked, was that most of the classes were quite small. This meant that they were really interactive and practical, and I got to know both my teachers and classmates really well. I enjoyed all of my group projects on exchange. They helped me meet more people and we worked on interesting topics that gave us an insight into the kinds of things we may be doing when we enter the workforce.’

Georgia Machen

Marketing and Management
Exchange to Lisbon, Portugal



Copenhagen Business School (CBS)

Copenhagen, Denmark

- Copenhagen is cycle-friendly city and is rated **one of the best student cities in the world**.
- CBS was founded in 1917, located in the heart of Copenhagen.
- CBS is one of Denmark's eight public universities.
- Triple crown accreditation, with **the best and most international business schools in Europe**.
- Courses are taught in English. Danish language courses are available for Exchange students
- Courses in **Finance, Economics, Marketing, and Management**.
- Estimated monthly living expenses: DKK 8250 – 12500 (\$1950 - \$3000 NZD)
- Student residences available.



Copenhagen Business School (CBS)

Copenhagen, Denmark

ACADEMIC INFORMATION

Semester Dates	Fall Semester: September - December Spring Semester: January - June
Class Format Style	Class size: 20 – 60 students. The number of lectures for a course varies greatly. Attendance is <u>not</u> mandatory.
Course Load	Required to register for 30 ECTS. 1 ECTS = 27.50 hours.
Course Assessment	100% based on exams. Written and oral exams. (Re-exams available)
Credit Equivalency	1 ECTS = 2 UC Points



Lund University

Lund, Sweden

- Sweden is one of Europe's largest countries by size, but only has 10 million inhabitants.
- It boasts the largest number of global companies per capita in the world.
- Lund University was founded in 1666 and is one of the world's top universities (85th in QS ranking).
- The university lies in the heart of the city, and **everything is within reach on foot or by bicycle**.
- Some courses are taught in English.
- Courses in **Economics and Management**.
- Estimated monthly living expenses: approximately 9900 – 13000 Swedish Krona (\$1,400 - \$2,000 NZD)
- Lund University has some housing options for exchange students. However, there is no housing guarantee.



Lund University

Lund, Sweden

ACADEMIC INFORMATION

Semester Dates	Autumn: <ul style="list-style-type: none">• Period 1: September – October• Period 2: November – January Spring: <ul style="list-style-type: none">• Period 3: January – March• Period 4: April - June
Class Format Style	Lectures with 25 – 30 people. Attendance mandatory.
Course Load	Required to register for 30 ECTS. 1 ECTS = 25 – 30 hours of study
Credit Equivalency	1 ECTS = 2 UC Points



Pompeu Fabra University (UPF)

Barcelona, Spain

- Barcelona is currently recognized as a global city due to its importance in the spheres of culture, finance, business, and tourism.
- **Barcelona is transport hub between Spain and France.**
- UPF is a modern public university that was founded in 1990
- Courses taught in English.
- Spanish language courses are available for exchange students (fee applied).
- Courses in **Economics, Finance, Management, and Law.**
- Estimated monthly living expenses: approximately €850 - €1,450 (\$1,500 - \$2,600 NZD).
- Student residences available.



Pompeu Fabra University (UPF)

Barcelona, Spain

ACADEMIC INFORMATION

Semester Dates	Term 1: September – December Term 2: January – March Term 3: April – June Each term consist of 10 weeks of classes and 2 weeks of exams.
Class Format Style	2 x 1.5 hour theoretical lecture/week. 1 x 1.5 hour seminar session/week. Attendance is compulsory.
Course Assessment	Individual group assignments, presentations, final exams.
Course Load	60 ECTS per year (20 ECTS per term). 1 ECTS = 25 study hours.
Credit Equivalency	1 ECTS = 2 UC Points



'I have had the incredible opportunity to study at Pompeu Fabra in Barcelona for 6 months. During this time I've made lifelong friends from all over the world and travelled to so many new countries in and around Europe as well as exploring Spain, and of course, Barcelona.'

Robin Leverington

International Business and minor
in Spanish

Exchange to UPF, Spain



Universidad of Navarra

Pamplona, Spain

- Pamplona is the capital of Navarra, known for its safety and student city with a remarkably low crime rate.
- Famous for the San Fermin festival (running with the bulls).
- **Top private university** in Spain.
- Many courses taught in English.
- Courses in **Economics, Finance, Management, and Marketing**.
- Up to two courses in Spanish language available to exchange students.
- Estimated monthly living expenses: approximately €800 - €1,250 (\$1,420 - \$2,220 NZD).
- A lot of student residences options.



Universidad of Navarra

Pamplona, Spain

ACADEMIC INFORMATION

Semester Dates	Fall term: September – December Spring term: January – May
Class Format Style	2 x 4 hour classes per week.
Course Assessment	Mid terms are common for most courses. Final exams are standard.
Course Load	Min: 24 ECTS. Max: 30 ECTS. From outside Business School: 12 ECTS. 1 ECTS = approx 25 hours.
Credit Equivalency	1 ECTS = 2 UC Points



‘An exchange not only helped with my professional development but it also improved my confidence. During my exchange at the University of Navarra, I developed and improved my communication and presentation skills, as well as my interpersonal, organisational and leadership skills. These are all great skills to have and I am benefiting from what I learned overseas now that I am working.’

Sophia Menzies

HRM and Economics

Exchange to Navarra, Spain



Radboud University

Nijmegen, Netherlands

- Located in Nijmegen, a friendly, vibrant, student town.
Known as the safest Dutch city to live and study.
- 1.5 hour away from Amsterdam by train, and has great train connection to Brussels, Paris, Berlin.
- **Bikes rental available for €16.50/month** (Nijmegen has more bikes than humans!)
- Courses in **Marketing, Management, Entrepreneurship, and Economics.**
- Courses taught in English.
- Estimated living expenses: approximately €1034/month (\$1,830 NZD).
- Accommodation arrangement support for exchange students available.



Radboud University

Nijmegen, Netherlands

ACADEMIC INFORMATION

Semester Dates	Fall Semester: September – December Spring Semester: January - May
Course Load	The standard course load is 30 ECTS per semester.
Course Assessment	Seminar attendance, assignments, written exams. (Mandatory seminar attendance).
Credit Equivalency	1 ECTS = 2 UC Points



‘My overall experience in Nijmegen was absolutely amazing - I would go back in a heartbeat. Living on the border with Germany was so epic - we biked across to go grocery shopping all the time. I meet amazing people from all over the world and now have some lifelong mates throughout Europe – super handy for the future.’

Mikaila Ceelen-Thomas

Marketing and HRM

Exchange to Radboud University,
Netherlands



Tilburg University

Tilburg, Netherlands

- Located in Tilburg, a true university city with a population for 30,000 students.
- Close to Amsterdam, Brussels, Paris, and Berlin. Great for traveling!
- Courses in **Economics and Management**.
- Courses taught in English.
- Languages courses are available for exchange students (up to 12 ECTS) **for free**.
- Estimated living expenses: approximately €1,000 per month (\$1,790 NZD).
- No on-campus accommodation. However, Tilburg is partnering with WonenBreborg which offers furnished accommodation for international students.



Tilburg University

Tilburg, Netherlands

ACADEMIC INFORMATION

Semester Dates	Fall Semester: Late August - December Spring Semester: Late January - June
Class Format and Style	A mix of guest lectures to a large number of students and interactive seminars, workshops, and tutorials with in-depth discussions of between 10 and 40 students.
Course Load	The standard course load is 30 ECTS per semester.
Course Assessment	Essays, case studies, in-class presentation, oral or written examinations.
Credit Equivalency	1 ECTS = 2 UC Points



University of Antwerp

Antwerp, Belgium

- Antwerp is located in the **heart of Europe**. A great starting point to visit other countries.
- Antwerp is the largest diamond centre in the world.
- Courses in **Economics, Finance, Management, and few Marketing**.
- Courses taught in English.
- Students have to **completed at least 240 points** (2 years) at UC. **Recommended for 3rd year students**.
- Estimated living expenses: approximately €900 - €1,200 per month (\$1,600 - \$2,100 NZD).
- University accommodation is available. University of Antwerp housing team is also available to support international students.



University of Antwerp

Antwerp, Belgium

ACADEMIC INFORMATION

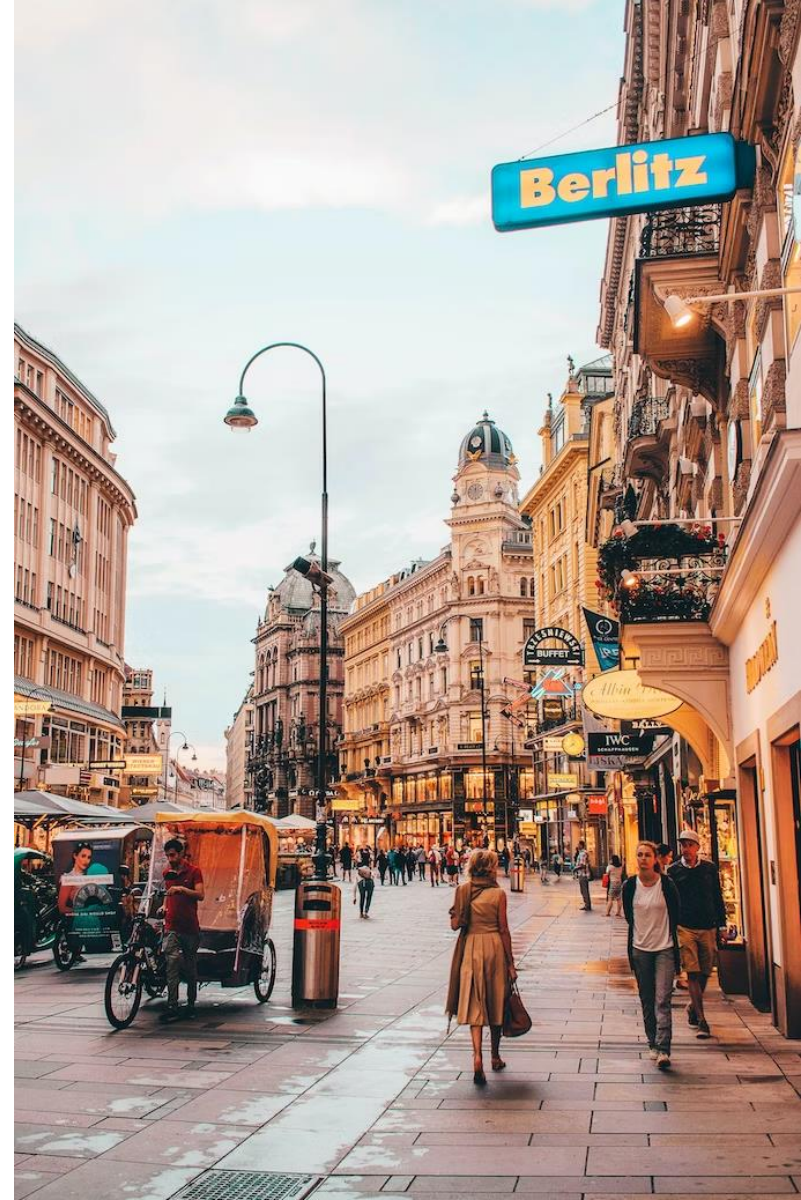
Semester Dates	Fall Semester: September - January Spring Semester: February - June
Course Load	Minimum: 20 ECTS per semester. Standard: 30 ECTS per semester. 1 ECTS = 25 – 30 study hours.
Course Assessment	Heavy weight placed on exams.
Credit Equivalency	1 ECTS = 2 UC Points



WU Vienna University of Economics and Business

Vienna, Austria

- Located in Vienna, the biggest city in Austria.
- WU is one of the largest business schools in Europe with 26,000 students.
- WU got an Award-winning Architecture - has 8 buildings built by 8 different architect from different countries.
- Over 180 courses taught in English.
- Courses in **Economics, Finance, Management, and Marketing**
- Estimated living expenses: approximately €1100 - €1,450per month (\$1,959 - \$2,582 NZD).
- On-campus accommodation is not available. Student housing available. OeAD student housing is recommended for exchange students.



WU Vienna University of Economics and Business

Vienna, Austria

ACADEMIC INFORMATION

Semester Dates	Fall Semester: September - December Spring Semester: January - May
Course Load	Minimum: 24 ECTS per semester. Standard: 36 ECTS per semester. 1 ECTS = 25 study hours.
Course Assessment	90% of courses are continuous assessment courses. Courses are highly interactive including lectures, case studies, papers, presentations, and group project. Exams are held during regular course session, no special exam week.
Credit Equivalency	1 ECTS = 2 UC Points



'The highlight of my exchange study was meeting many people from a range of different countries. I really enjoyed being able to get involved in a new city and culture. Being able to head out and explore a city that is very efficient and extraordinary was really special! Living in New Zealand, it is harder to explore new countries so I jumped at the opportunity and made sure that I made the most of my time in Europe by exploring new places when I could.'

Alex Holmes

Marketing and Finance

Exchange to Vienna, Austria



WHU Otto Beishem School of Management

Vallendar, Germany

- In Vallendar – a small historic town with 1.5 hour train to Frankfurt.
- WHU is Germany's top business school and high-ranking business school in the world.
- Internationally oriented and private finance elite business school.
- Courses taught in English.
- Courses in **Accounting, Entrepreneurship, Finance, and Management.**
- Estimated living expenses: approximately €800 - €1,200 per month (\$1,422 – \$2,200).
- WHU housing office will assist exchange student in finding accommodation.



WHU Otto Beishem School of Management Vallendar, Germany

ACADEMIC INFORMATION

Semester Dates	Fall Semester: September – December Spring Semester: January - April
Course Load	Standard study load: 30 ECTS. Regular workload for exchange students: 5 – 7 courses/semester. 1 ECTS = 25 - 30 study hours.
Course Assessment	Lectures, group work, case studies, and exams.
Credit Equivalency	1 ECTS = 2 UC Points



ZHAW School of Management and Law

Winterthur, Switzerland

- Located in Winterthur, 20 minutes away to Zurich by train.
- ZHAW is one of the largest business schools in Switzerland.
- Courses taught in English.
- German language courses available for exchange students.
- Courses in **Accounting, Economics, Finance, Management, Marketing, and Business Law.**
- Estimated living expenses: approximately CHF 1,380 – CHF 1,850 per month (\$2,556 -- \$3,500 NZD).
- No on-campus accommodation available. Options: student residence, private housing, homestay.



ZHAW School of Management and Law

Winterthur, Switzerland

ACADEMIC INFORMATION

Semester Dates	Fall Semester: September – February Spring Semester: February – July
Course Load	Standard study load: 30 ECTS Maximum: 45 ECTS 1 ECTS = 25 study hours.
Credit Equivalency	1 ECTS = 2 UC Points



Exchange Partners in UK

[University of Exeter](#)

[University of Leeds](#)

[University of Nottingham](#)

[University of Sheffield](#)

United Kingdom
(open to all UC
students)



University of Exeter

Exeter, UK

- Exeter is an ancient city on the River Exe in **southwest England**, and 2.5 hours train to London
- stunning scenery, outstanding quality of life, low rates of crime and increasingly excellent economic prospects
- **Three campuses** – Streatham, and St Luke's (Exeter), Penryn (Cornwall).
- It's important to choose a campus that offers your subject of choice, e.g. Exeter campuses offer **economics and finance & accounting (ACCA accredited)**, while Penryn campus offers **business, management**, and law.
- A wide range of **on-campus accommodation** available (both catered and self-catered)
- Estimated living expenses per month: £1140 - £1340 (\$2300 - \$2800 NZD)



University of Exeter

Exeter, UK

ACADEMIC INFORMATION

Semester Dates	Fall semester: mid Sep – late Dec Spring semester: mid Jan – early May
Class Format and Style	Lectures, seminars, tutorials, webinars. Lectures are typically 50 minutes.
Course Load	Single semester students must take 60 Exeter credits and full year students must take 120 Exeter credits. Most modules are either 15 or 30 credits.
Course Assessment	Coursework, online quizzes, assignments, group work, final exams, etc
Credit Equivalency	1 Exeter credit = 1 UC points



University of Leeds

Leeds, UK

- Leeds is a large, **affordable**, and **multicultural** city
- Central location – trips to London, Manchester, or Edinburgh, all within three hours on the train
- One of the **UK's most popular student cities**. Leeds is a diverse community of 39,800 students including 14,400 intl students from 137 countries.
- One of the largest campus in the UK and a short walk from Leeds city centre
- On-campus accommodation is available
- Business courses are available across **Accounting (ACCA accredited), Economics, Finance, Information System/Business Analytics, International Business, Management (HRM, Supply Chain), Marketing**
- Estimated living expenses per month: £1140 - £1340 (\$2300 - \$2800 NZD)



University of Leeds

Leeds, UK

ACADEMIC INFORMATION

Semester Dates	Fall semester: Sep - Dec Spring semester: Jan – May
Class Format and Style	Class size varies. For business courses, there could be >300 students per class.
Course Load	A full-time workload is 50 to 60 credits per semester. 10 Leeds credits = 100 hours
Course Assessment	Some course assessments are heavily weighted towards exams. You can find specific course assessment criteria in the module catalogue.
Credit Equivalency	1 Leeds credit = 1 UC points





University of Nottingham

Nottingham, UK

- Nottingham is ranked in the top 10 in QS Best Student Cities 2022. A vibrant, **student-friendly city** that has endless activities for all sorts of interests, personalities, tastes, and budgets.
- A member of the Russell Group - a truly global university with campuses in the UK, Malaysia, and China.
- A wide range of on-campus accommodation options (both catered and self-catered)
- 10 – 15 business courses available each semester at UG level, subjects covered – Accounting, Economics, Finance, Management, Marketing
- Estimated living expenses per month: £1140 - £1340 (\$2300 - \$2800 NZD)



University of Nottingham

Nottingham, UK

ACADEMIC INFORMATION

Semester Dates	Fall semester: Sep - Jan Spring semester: Jan – June
Course Load	Standard: 60 credits per semester Min: 50 credits per semester Max: 70 credits per semester 30 credits must be from the Business School each semester. Most courses are worth 10 or 20 credits. Some of the courses are full-year courses.
Credit Equivalency	1 Nottingham credit = 1 UC points



University of Sheffield

Sheffield, UK

- Sheffield is UK's fourth largest city with a population of about 551,000. Known as 'the outdoor city' with all of its running and hiking trails, climbing, cycling, and one third of the city inside the Park District National Park.
- With more than 2 million trees and 200 parks and green spaces, Sheffield is one of the greenest cities in Europe.
- Business subjects: Accounting (ACCA, CPA accredited) and Financial Management, Business Management (Management, Marketing), International Business
- On-campus accommodation available
- Estimated living expenses per month: £1140 - £1340 (\$2300 - \$2800 NZD)



University of Sheffield

Sheffield, UK

ACADEMIC INFORMATION

Semester Dates

Fall semester: Sep - Feb
Spring semester: Feb – June

Class Format and Style

May include lectures, seminars, tutorials, and labs. Classes are typically 3 hours.

Course Load


Standard workload: 60 credits per semester/120 credits per year. Minimum: 40 credits per semester/100 credits per year. Most courses are worth 10-20 credits

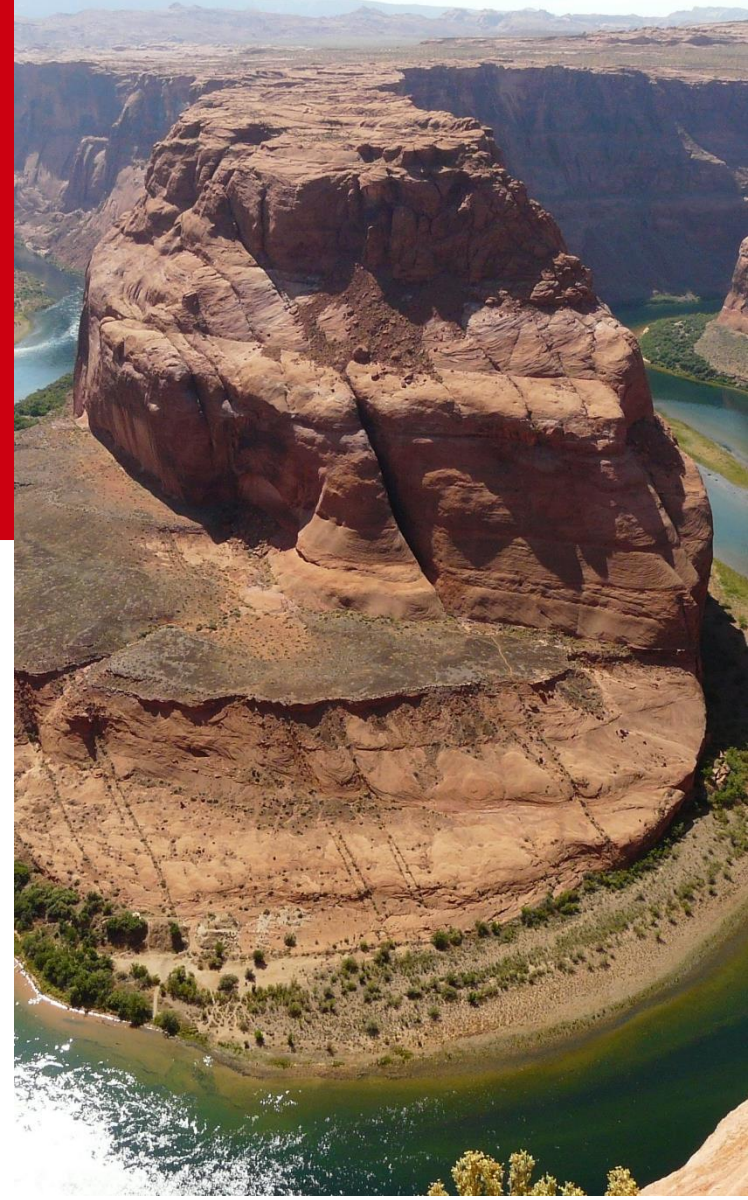
Credit Equivalency

1 Sheffield credit = 1 UC points



Exchange Partners in North America

University of Alberta	Canada (open to all UC students)
Queen's University (<i>Economics subject only</i>)	
University of British Columbia	
Simon Fraser University (<i>only can choose courses offered by Chang Institute for Entrepreneurship</i>)	
Montana State University	United States (open to all UC students)
Purdue University	
State University of New York (SUNY) at Geneseo	
University of Colorado - Boulder	
University of California (different campuses available)	



University of Alberta

Edmonton, Canada

- Canada's “**Sunshine Province**” offers quality education, career opportunities, and an affordable cost of living.
- It is a **nature-lovers paradise**, surrounded by mountains, forests, prairies, and deserts, and has more than 600 lakes in the province.
- UAlberta is a **Top 5** Canadian university
- Alberta School of Business is one of the leading business school and ranked **#1** in Canada and **#30** globally for Business and Economics subject
- Business courses in Accounting, Business Technology Management, Entrepreneurship and Innovation, Finance, HRM, International Business, Marketing, Operation Management
- On-campus accommodation available
- Estimated monthly living cost: approx. \$1,375 per month (nzd \$1,680)



University of Alberta

Edmonton, Canada

ACADEMIC INFORMATION

Semester Dates	Fall semester: Sep - Dec Spring semester: Jan - April
Course Load	Maximum 15 credits per semester Most of the courses are 3 credits, so students need to take 5 courses in a semester Normally a 3-credit course provides 39 lecture hours at 3 hours per week.
Credit Equivalency	1 UAlberta credit = 4 UC points



University of British Columbia

Vancouver, Canada

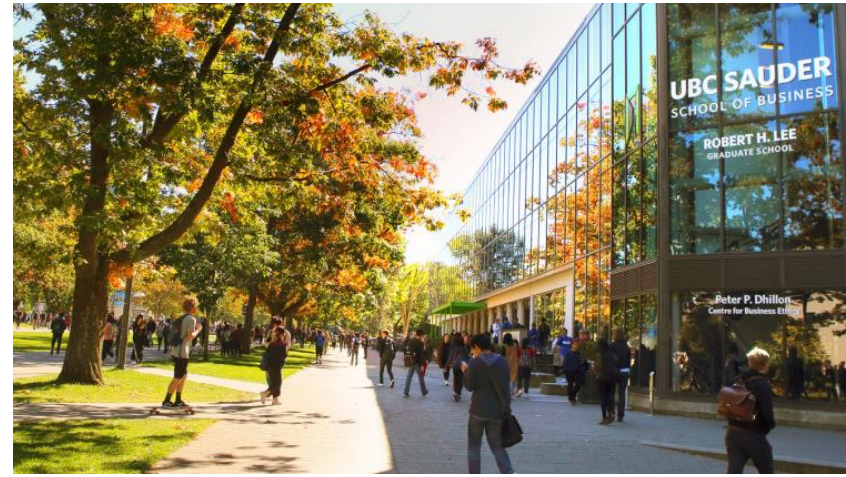
- a bustling west coast seaport in British Columbia, is among Canada's densest, most ethnically diverse cities. A popular filming location, it's surrounded by mountains, and also has thriving art, theatre and music scenes.
- **Direct flight** from AKL to Vancouver (easy access)
- One of the most **popular exchange destination** for UC students – prepare for internal competitions
- Ranked **#34** in the world
- UBC campus is located about 10km west of downtown Vancouver, well connected with metro and bus (*student public transit pass - \$173 CAD per semester*)
- On-campus accommodation available
- **Estimated living cost** per semester: \$6,900 - \$14,500 CAD (\$8,500 - \$17,700 nzd)



University of British Columbia

Vancouver, Canada

- Business courses are in high demand – need to be flexible with the course selection
- Areas of study: Accounting, Business Economics, Finance, Management (HRM, Supply Chain), International Business, Business Technology Management, Marketing, Real Estate

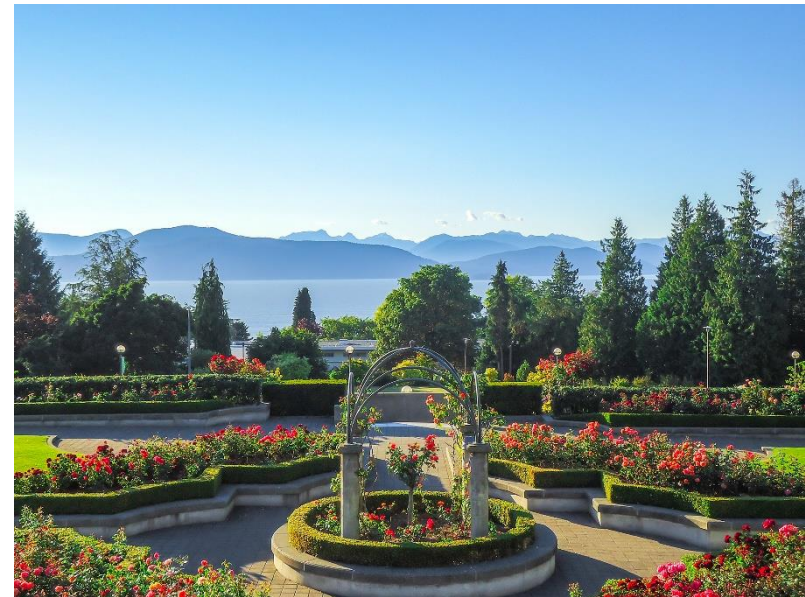


University of British Columbia

Vancouver, Canada

ACADEMIC INFORMATION

Semester Dates	Fall semester: Sep - Dec Spring semester: Jan - May
Class Format and Style	Most UG courses – 3 hours class time per week Lectures (50-80 mins each), weekly tutorial, Labs for certain courses
Course Load	Maximum 12 credits of COMM/COHR courses Strict pre-requisite applies
Course Assessment	many courses have both midterms and final exams
Credit Equivalency	3 UBC credit = 15 UC points



Purdue University

West Lafayette, Indiana, US

- One of the nation's **top public universities**
- Globally renowned for its academic excellence particularly in Engineering and Management.
- Purdue University has one of the **largest international student group** in the United States, making the Greater Lafayette area a culturally diverse and vibrant community.
- The community is rich with tradition and all the beauty of a classic Midwestern destination. Downtown you will find antiques, boutique shopping, quaint coffee shops and restaurants, pubs and local breweries.
- Purdue ranked **#99** in QS World University Ranking, **#30** for Business UG Programme (US News ranking)
- On-campus accommodation available
- Approximate expenses for one semester are \$7,230 USD (11,800 nzd) for room & meal plan, books, and personal expenses.



Purdue University

West Lafayette, Indiana, US

ACADEMIC INFORMATION

Semester Dates	Fall semester: mid Aug – mid Dec Spring semester: end of Jan – mid May
Class Format and Style	Classes are 45 to 60 minutes
Course Load	Minimum course load: 12 credits per semester. Students generally take 3 to 5 courses per semester.
Course Assessment	Expect daily or weekly homework assignments, group work, mid-term tests, and final exams.
Credit Equivalency	1 Purdue credit = 4 UC points



‘Being able to live with your friends and hang out at the pool, go rock-climbing, or play any sport we could think of after classes all added to the experience. Having the opportunity to explore bits of America with friends was definitely amazing! But my greatest highlight was getting on the plane in Christchurch and realising that this was the first step in an adventure I had planned myself.’

Lydia Dudson
Economics and Finance
Exchange to Purdue University



University of Colorado Boulder

Boulder, Colorado, US

- Boulder is a city **at the foothills of the Rocky Mountains**, in northern Colorado. Colorado is home to 28 ski areas
- The University has an **active student life** with a wide variety of social and athletic clubs and a student recreation centre with rock climbing, ice skating, swimming, tennis, weightrooms, and racquetball courts.
- Boulder is the perfect balance of urban and outdoors.
- over 300 days of sunshine per year and was named **#1 Sports Town in America** by Outside Magazine.
- Business subjects: **Accounting, Business Analytics, Finance, Management and Entrepreneurship, Marketing, Real Estate**
- on-campus housing is **extremely limited** to exchange students.
- Estimated cost per semester: \$9,000 USD (\$14,740 nzd)



University of Colorado Boulder

Boulder, Colorado, US

ACADEMIC INFORMATION

Semester Dates

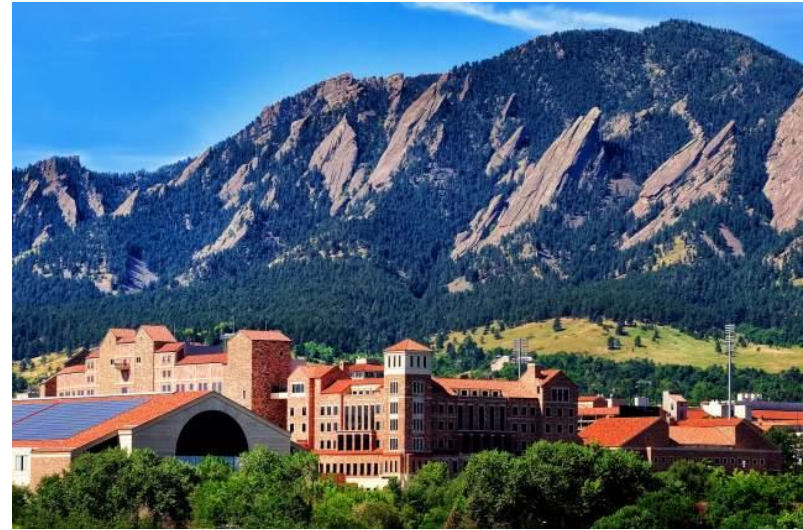
Fall semester: Late Aug - Dec
Spring semester: Jan – early May

Course Load

Exchange students must maintain full time student status – normal UG course load is 12 – 15 credit hours per semester (each course usually 3 – 5 credits)

Credit Equivalency

3 CU Boulder credit = 12 UC points



University of California

California, US

- Every UC campus provides a challenging, meaningful and transformative experience.
- Campus selection depends on your major or the subject area where you will spend the majority of your time studying
- **Accounting** – UC Santa Barbara, Santa Cruz
- **Management** – UC Berkeley, Irvine, Merced, Riverside
- **Economics** - UC Berkeley, Davis, Irvine, LA, Merced, Riverside, San Diego, Santa Barbara, Santa Cruz
- Strict pre-requisite applies, e.g. all campuses requires intro microeconomics, intro macroeconomics, calculus, statistics
- The cost of living in urban and coastal areas is usually higher than other locations.
- Part-time, on-campus employment is permitted and is a good way to earn extra money.



State University of New York at Geneseo

Geneseo, US

- Founded in 1871, SUNY Geneseo is a premier public liberal arts college.
- Located on 220 acres in the historic Village of Geneseo, and a short drive from Rochester and Buffalo, Geneseo offers a warm environment for learning and discovery.
- One popular attraction, the beautiful Letchworth State Park, is located 6 miles south of town.
- Business subjects: Accounting, Data Analytics, Economics, Entrepreneurship, Finance, Marketing, Management
- Exchange students are strongly encouraged to live in residence halls.
- Estimated cost per semester: \$10,680 USD (\$17,491 nzd) including room, meal plan, health insurance, books, personal expenses, etc.



State University of New York at Geneseo

Geneseo, US

ACADEMIC INFORMATION

Semester Dates	Fall semester: Aug - Dec Spring semester: Jan – May
Class Format and Style	On average 22 students per class. 2 or 3 one-hour classes per week per course. Check course catalogue to find timetabling
Course Load	Minimum: 12 credits per semester Max: 18 credits per semester Most courses are 3 credits which is equivalent to 12 UC credits.
Credit Equivalency	1 Geneseo credit = 4 UC points



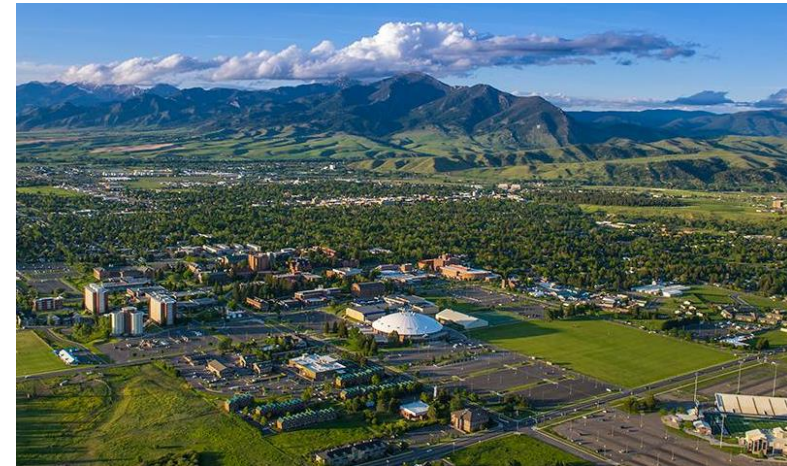
Montana State University

Bozeman, Montana, US

- fly over the Bridger Range or drive into the Gallatin Valley and find yourself surrounded by mountains
- A **vibrant college community** and an energetic downtown
- Bozeman averages **300 days of sunshine**. Due to the dry climate, summers are pleasant with warm days and cool nights.
- MSU is the state's largest university and offers UG degrees in 60 fields.
- Business subjects: **Accounting, Finance, Management, Marketing**
- On-campus accommodation available
- Off-campus apartments and rental houses can be found within easy walking distance of campus. Rent including utilities, for one student per month, will range from \$500 to \$1,200 USD per month (\$818 - \$1,900 nzd).

WELCOME TO MSU!

M MONTANA STATE UNIVERSITY | Office of International Programs



Montana State University

Bozeman, US

ACADEMIC INFORMATION

Semester Dates

Fall semester: late Aug – mid Dec
Spring semester: mid Jan – early May

Credit Equivalency

1 MSU Boulder credit = 4 UC points



Exchange Partners in Latin America

[Universidad de los Andes](#)

Colombia



[Universidad de Chile Facultad de Economía y
Negocios](#) (University of Chile Faculty of
Economics and Business – FEN)

Chile



Universidad de los Andes

Bogota, Colombia

- Bogota's rich **cultural and historical significance** allows students to immerse themselves in Colombian heritage and experience traditional festivals.
- Situated at 2,640 meters above the sea – the educational, administrative, financial and political center of Colombia with affordable cost of living
- It is the only Colombian non-profit university with national accreditation
- A number of courses are taught in English, mainly in **Management**, with a few in accounting, economics, psychology, and law



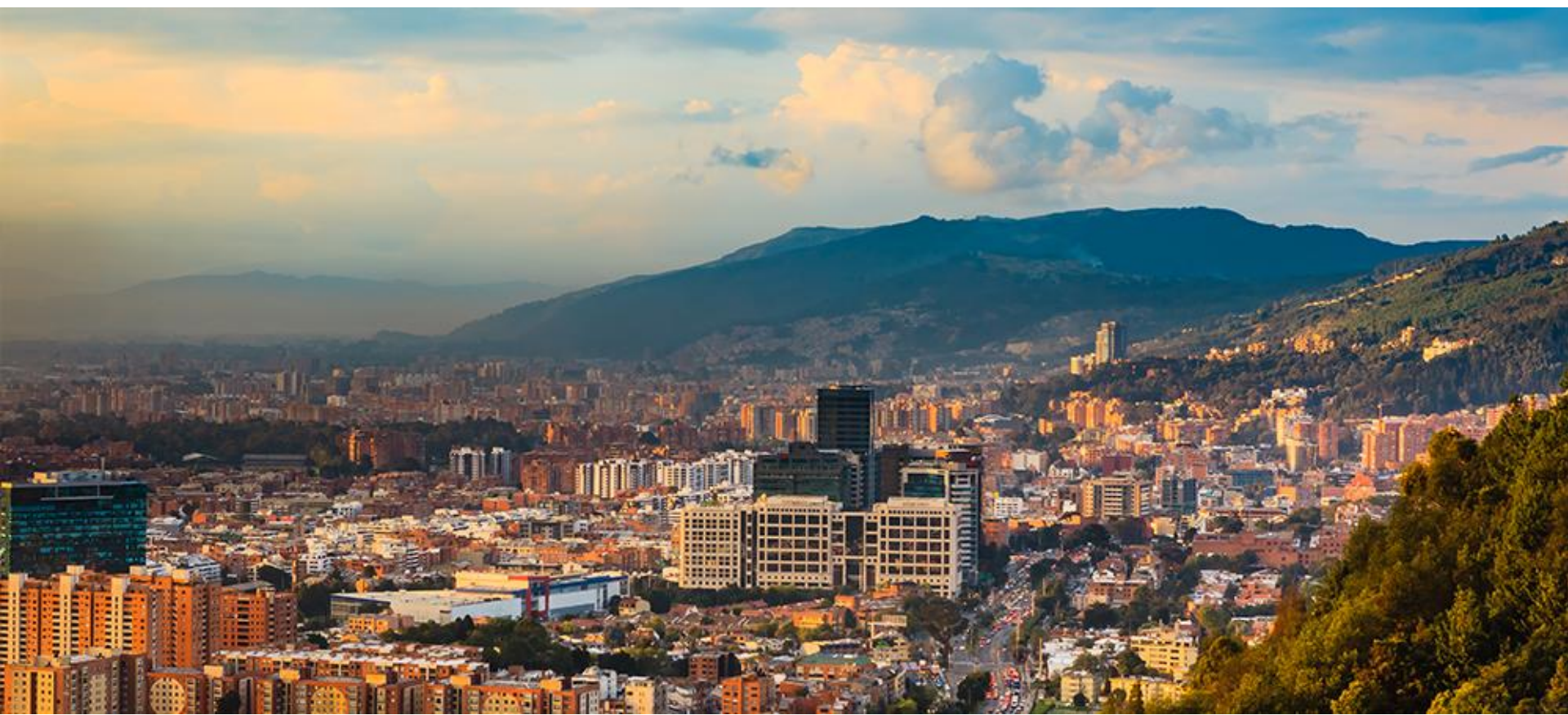
Universidad de los Andes

Bogota, Colombia

ACADEMIC INFORMATION

Semester Dates	Fall semester: Aug - Dec Spring semester: Jan - May
Course Load	Minimum: 9 credits. Maximum: 20 credits A normal course load at Andes is 18 credits per semester
Class Hours	1 credit = 48 hours of course work
Course Assessment	Lectures, readings, class participation, self-study, and exams.
Credit Equivalency	1 Andes credit = 3.33 UC point





Universidad de Chile

Santiago, Chile

- A glance through the skyscrapers reveals a mighty circle of mountains - the snow-capped Andean peaks to the east, and a smaller coastal range to the west - that frames the Chilean capital
- The oldest and most prestigious university in Chile
- The Faculty of Economics and Business (FEN) of the Universidad de Chile is one of Latin America's leading Business Schools. AACSB and AMBA accredited
- About 3,500 students are registered in the undergraduate programmes.
- 30+ courses per semester are taught in English, in Management, Economics, Information Systems, Management Control



Universidad de Chile

Santiago, Chile

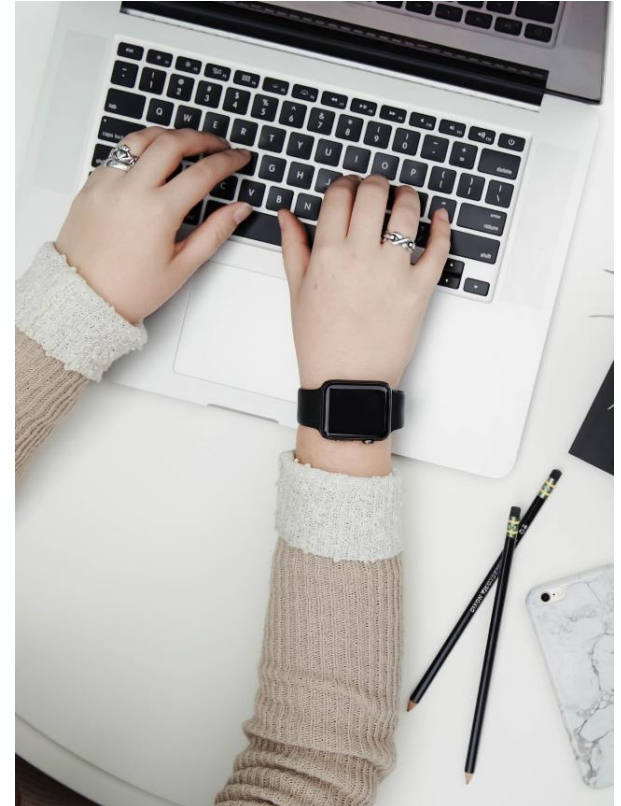
ACADEMIC INFORMATION

Semester Dates	Fall semester: July - November Spring semester: March - July
Course Load	A normal workload is 5 courses for locals, but the recommended course load for international students is 3 or 4
Class Format and Style	Most courses have 1.5 hours of lectures twice a week plus a tutorial/lab session every other week for 1.5 hours
Class Hours	Classes consist of 48 class hours and 24 lab hours per semester
Course Assessment	Mid-term and final examinations, group work
Credit Equivalency	1 FEN credit = 2 UC point



How to participate?

- Attend an info session about exchange – you already did! ;)
- Exchange course planning and advice with UC Business School Internationalisation Team
- Destination research – pick 3 partner universities that you would like to go for exchange
- Fill out an online application from:
<https://www.canterbury.ac.nz/study/study-abroad-and-exchange/outgoing-exchange-current-uc-students/application/>
- Includes a “statement of purpose”. Please tell us in 500 words why you wish to take part in a university exchange.
- Need to attach a list of proposed courses (Note, you will officially apply for courses later). Feel free to refer to [this document](#) for assistance in checking course equivalence at our exchange partners. This list has been compiled based on courses taken by students on their most recent exchanges.



Global Short Course

- Similar to exchange programme but in a shorter period of time (2 – 4 weeks)
- Earn 15 or 30 points credit towards your UC degree, depending on the programme offered at the partner university
- Usually offered during winter or summer break



Business Short Course in France

26 June - 7 July or 3 - 14 July 2023

Escape winter for summer in France

- Study with a leading European business school
- Earn UC credit, pay UC fees
- \$1,500 Award available



 Business School
Te Kura Umanga 



Business Short Course in Vienna

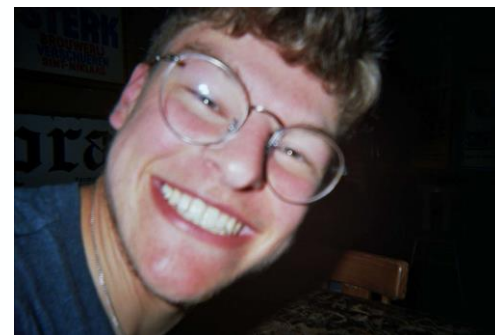
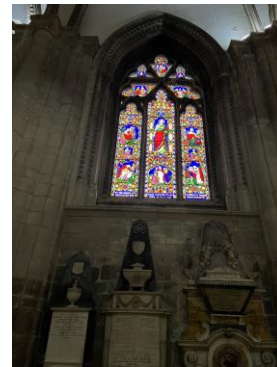
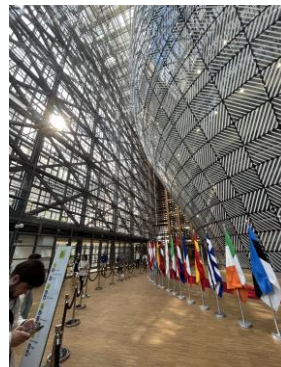
3 - 21 July 2023

Escape winter for summer in Vienna

- A unique three-week intercultural experience
- Earn UC credit, pay UC fees
- \$1,500 Award available



 Business School
Te Kura Umanga 



Global Study Tours

Past Experiences

- MGMT228 (Chinese Business Practices and Culture Study Tour)
- ECON228 (Study Tour to South America)

2023

- BSNS228 International Study Tour to Malaysia

During this two-week study tour, you will be based at Taylor's University in Subang Jaya, part of the greater Kuala Lumpur area. In addition to lectures delivered by Taylor's University, you will undertake business visits and cultural activities, including a day trip to Malacca and free days to explore on your own.

Late applications are still acceptable, need to apply asap



BSNS228: International Study Tour to Malaysia

12–28 November 2023

- Experience life in Kuala Lumpur and learn about Malaysian business practices and culture
- Earn 15-points of credit

More information



Semester Exchange + Short Course + Study Tour



Semester Exchange: Go overseas for 1 or 2 semesters and earn 60 to 120 UC points towards your BCom degree.

Short Course: Go overseas for 2 – 4 weeks over UC summer or winter break and earn 15 to 30 points of elective course(s) towards your BCom degree.

BSNS228 Study Tour: Go overseas with a group of UC student (led by UC academic) and earn 15 points 200-level elective credit towards your BCom degree

Taking both or all opportunities is possible.

UC Business School CQ Certificate



- Maximise the benefits and receive recognition for your participation in one of these global opportunities by completing the UC Business School CQ Certificate.
- Cultural Intelligence (CQ) is a person's capability to function effectively in culturally diverse situations, which is important given graduates today will inevitably work in culturally diverse organisations and teams.

Required steps to get the certificate:

1. Undertake a pre-experience CQ assessment
2. Participate in UC Business School CQ workshop
3. Develop a CQ Development Plan
4. Submit and receive feedback from an experienced mentor for the CQ Development Plan
5. Complete an approved international experience (Go for exchange/short course programme/Tūhono, etc.)
6. Undertake a post-experience CQ assessment and submit a final report reflecting on your development
7. Receive feedback on the final report from your mentor, including ideas for further development

What's coming up

- Exchange Drop-in Session

Time: Friday 4 August 10.30am – 12.30pm

Location: Meremere 528C

- Exchange Advice – book an appointment with Karina/Tracy

booking link: <https://www.canterbury.ac.nz/business/global-opportunities/semester-exchange/>

Email: businessinternational@canterbury.ac.nz

- Late applications for exchanges in S1 2024 – apply before **13 August 2023** (with selected partners)
- Exchanges in S2 2024 – first round of applications closes on **1 September 2023**
- PMSA & PMSLA applications – **4 September 2023**



Thank you Q&A

Follow [@uc_business](#)
Instagram to see more of
student exchange takeovers!

Scan me!

