

# 11. Appendices



isthmus

WOODS  
BAGOT.

360°

## 11.1 Significant trees

### 11.1.1 Categories of significance

Categories of "Significance"	Response
Planting to memorialize a death	<ol style="list-style-type: none"> <li>1. Transfer 'memorial' to heritage garden where original planting will be disturbed, where tree dies, becomes diseased or is otherwise unsustainable.</li> <li>2. Retain memorial trees where plantings are retainable.</li> <li>3. <b>No</b> further memorial trees planted on Ilam Campus as per Memorial Policy</li> </ol>
Commemorative trees – planting to note moments in UC history	<ol style="list-style-type: none"> <li>1. Maintain where plantings are sustainable</li> <li>2. Remove those that are unsustainable and replace where feasible.</li> <li>3. <b>No</b> further commemorative plantings on Ilam Campus as per Memorial Policy.</li> </ol>
'Significant' – Look and feel of gardens/trees add to the value and character of the UC Estate	<ol style="list-style-type: none"> <li>1. Maintain as per Landscape Master Plan</li> </ol>
Endangered Trees (as per ICUN)	<ol style="list-style-type: none"> <li>1. Managed as a commemorative tree under Landscape Master Plan</li> </ol>

The University of Canterbury will endeavour to protect known commemorative trees and ICUN endangered species.

Information regarding significant trees has been provided by the University of Canterbury. Review of trees and their significance should be carried out on a project by project basis, including review of the Christchurch District Plan.

# 11.1.2 Significant trees on campus: Dovedale

KEY No:	SPECIES:	SCIENTIFIC NAME:	ASSOCIATED WITH:
1	BALTIC PINES (4 OFF)	PINUS EXCELSA	LANCE MCCASKILL
2	OAK	QUERCUS ACUTISSIMA	E C ROBINSON
3	MAGNOLIA	MAGNOLIA GRANDIFLORA	TBA
4	CAMELIA	CAMELIA	KATE SHEPARD 100 YEAR ANNIVERSARY
5	KAUARI	AGATHUS AUSTRALIS	DEATH OF STUDENT
6	GINKGO	GINKGO BILBOA	JOHN GUNN POLSON
7	KOWHIA	SOPHORA MICROPHYLLA	GARY MARSH
8	LIME	TILIA EUROPAEA	JACK MANN
9	MAPLE	ACER PSEUDOPLATANUS ESK SUNSET	DR COLIN KNIGHT
10	TULIP TREE	LIRIODENDROIDAE	COMMEMORATIVE
11	LILAC	SYRINGA VULGARUS	CINDY INCH
12	CAMELIA	CAMELIA	ROBIN EVENS
13	ACER	ACER NEGUNDO	E SUNDERLAND
14	CHEERY	PRUNUS	10 YEARS STUDY AT CCEL
15	OAK	QUERCUS ROBUR	CHARLES HODGKINSON
16	HORSECHESTNUT	AESCULUS HIPPOCASTANUM	REMEMBRANCE JOHN A DORAN
17	OAK	QUERCUS COCCINIA	GRAEME STOOP
18	OAK	QUERCUS PETRAEA	BRUCE D JAMIESON
19	OAK	QUERCUS RUBRA	IAN HALL
20	ASH	FRAXINUS AMERICANA	WENDY RITCHIE
21	KOWHAI	SOPHORA MICROPHYLLA	RT HON JENNY SHIPLEY
21	KOWHAI	SOPHORA MICROPHYLLA	ANNE KNIGHT
21	KOWHAI	SOPHORA MICROPHYLLA	BASIL DOSSETT
22	MAPLE	ACER	ANN BERNEY



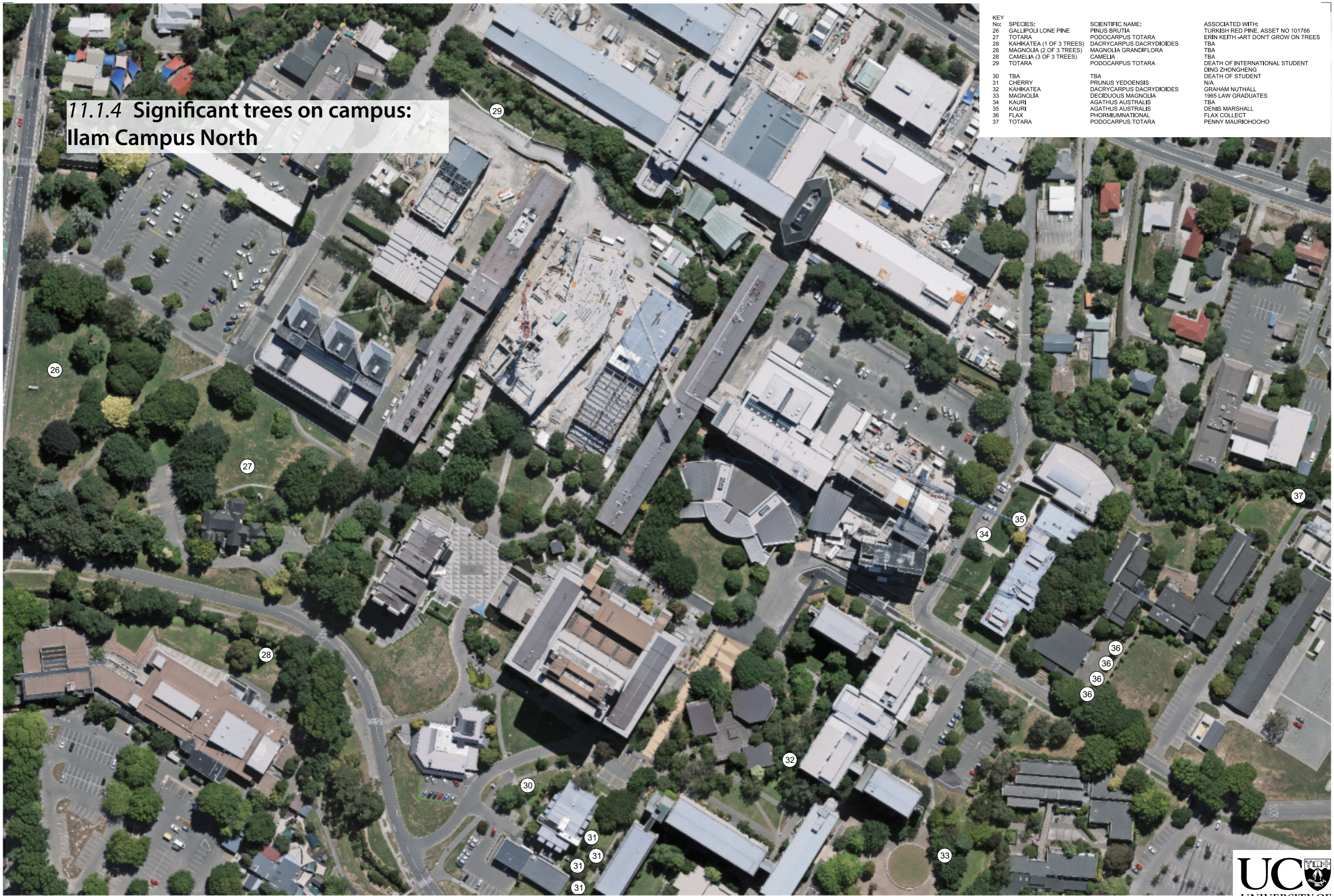


**11.1.3 Significant trees on campus:  
Ilam Gardens**

KEY No:	SPECIES:	SCIENTIFIC NAME:	ASSOCIATED WITH:
23	OAK	QUERCUS ROBUR	FIELD FAMILY
24	GINKGO	GINKGO BILOBA	DEATH OF STUDENT
25	KAURI	AGATHUS AUSTRALIS	DEATH OF STUDENT
26	GALLIPOLI LONE PINE	PINUS BRUTIA	TURKISH RED PINE, ASSET NO 101766

# 11.1.4 Significant trees on campus: Ilam Campus North

KEY No:	SPECIES:	SCIENTIFIC NAME:	ASSOCIATED WITH:
26	GALLIPOLI LONE PINE	PINUS BRUTIA	TURKISH RED PINE, ASSET NO 101766
27	TOTARA	PODOCARPUS TOTARA	ERIN KEITH -ART DON'T GROW ON TREES
28	KAHKATEA (1 OF 3 TREES)	DACRYCARPUS DACRYDIOIDES	TBA
28	MAGNOLIA (2 OF 3 TREES)	MAGNOLIA GRANDIFLORA	TBA
28	CAMELIA (3 OF 3 TREES)	CAMELIA	TBA
29	TOTARA	PODOCARPUS TOTARA	DEATH OF INTERNATIONAL STUDENT DING ZHONGHENG DEATH OF STUDENT
30	TBA	TBA	N/A
31	CHERRY	PRUNUS YEDOENSIS	GRAHAM NUTHALL
32	KAHKATEA	DACRYCARPUS DACRYDIOIDES	1965 LAW GRADUATES
33	MAGNOLIA	DECIDUOUS MAGNOLIA	TBA
34	KAURI	AGATHUS AUSTRALIS	DENIS MARSHALL
35	KAURI	AGATHUS AUSTRALIS	FLAX COLLECT
36	FLAX	PHORMIUM TACTONAL	PENNY MAURIOHOHO
37	TOTARA	PODOCARPUS TOTARA	





KEY	SPECIES:	SCIENTIFIC NAME:	ASSOCIATED WITH:
No:	CHERRY	PRUNUS YEDOENSIS	N/A
31	MAGNOLIA	DECIDUOUS MAGNOLIA	1965 LAW GRADUATES
33	CEDAR	CEDRUS DEODARA	SAM LEWIS
38	KAUAI	AGATHIS AUSTRALIS	JOHN GRANT
39	CANDELABRA	ARAUCARIA AUGUSTIFOLIA	THREATENED SPECIES
40	CANDELABRA	ARAUCARIA AUGUSTIFOLIA	THREATENED SPECIES
41	CHINESE SWAMP CYPRESS	GLYPTOSTROBUS PENSIENSIS	THREATENED SPECIES
42			

**11.1.5 Significant trees on campus:  
Ilam Campus South**

---

## 11.2 Statutory Planning Context

### 11.2.1 Significant features

*The following sections of the Christchurch District Plan apply to the significant feature and landscape overlay on the Haereroa-Avon River:*

#### 9.2.9 Appendices

##### 9.2.9.1.3 Significant features

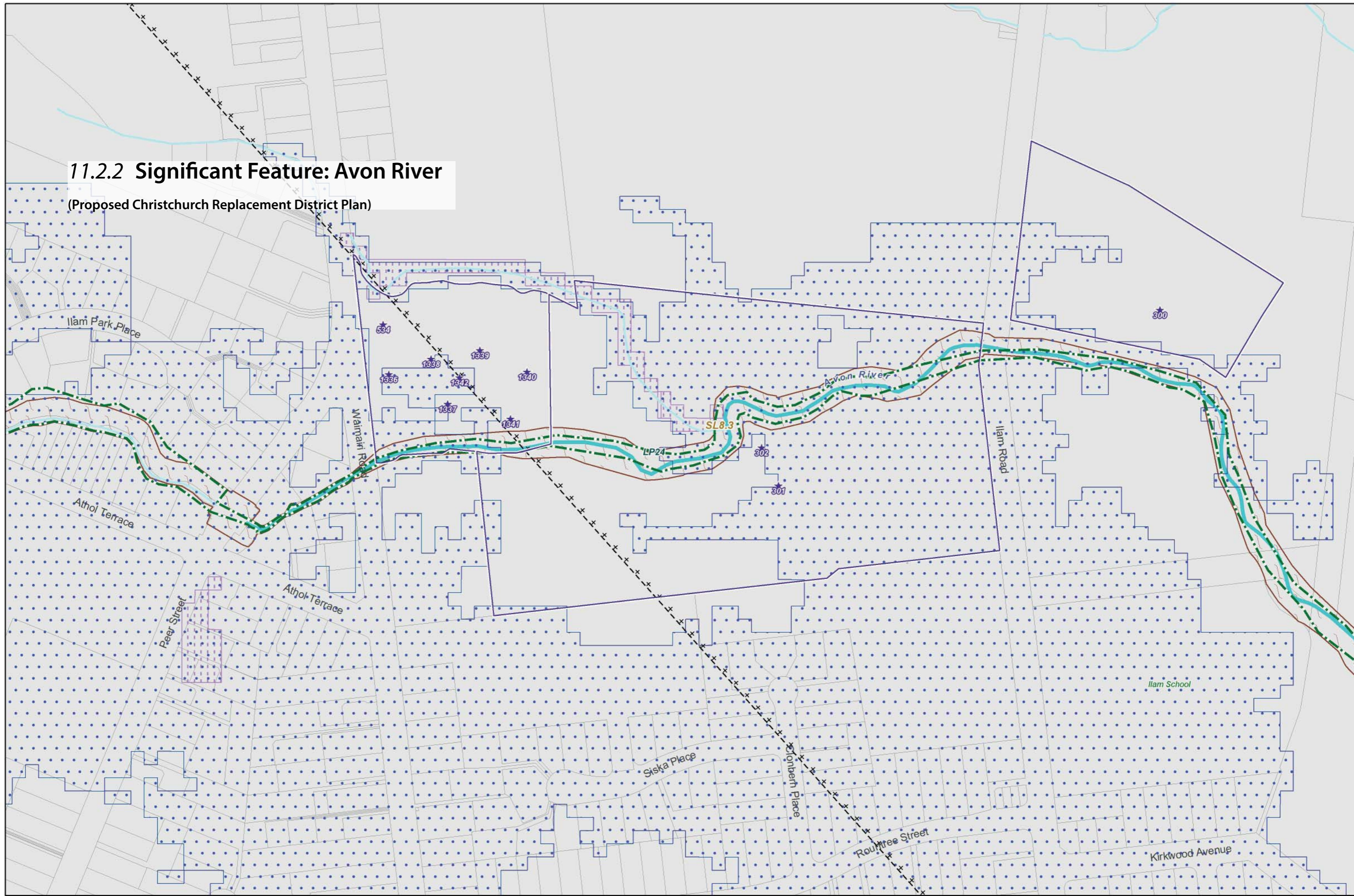
The following are the district's identified significant features and their qualities:

Ōtākaro/Avon River and Heathcote River/Ōpāwaho:

1. The rivers provide an important natural contrast with the wider urban environment.
2. Ecologically important, including for indigenous fauna and indigenous vegetation.
3. Historic heritage associated with both early Māori and European settlement.
4. Cultural significance to Ngāi Tahu, particularly relating to mahinga kai and associated pā and kāinga (settlements).
5. The river banks have high amenity values and valued for passive recreation.
6. The Ōtākaro/Avon River is an important natural feature in the city, particularly at Mona Vale, Hagley Park, the Botanic Gardens, and Central City, and contains remnant channels, basins, wetlands and springs reflecting the geomorphological history of the city landscape.
7. Heathcote River/Ōpāwaho with its origin in the tributary streams flowing from Port Hills provides a corridor of high amenity values as it meanders through the residential suburbs and has strong historic heritage values, particularly in the industrial area of Woolston and Radley's wharf where the towpath along the river is now used as a walkway.

# 11.2.2 Significant Feature: Avon River

(Proposed Christchurch Replacement District Plan)



LEGEND BELOW



# Heritage Items and Settings Aerial Map

Aerial Map Reference: 656  
 Heritage Item Number: 302  
 Heritage Setting Number:

## 11.2.3 Heritage items: Ilam Gardens and Homestead, College House and Okeover House



Heritage Item and Setting boundaries are a visual reference only as they have been captured against specific sets of aerial photography. The outer boundary of the setting is deemed to follow:  
 a) the specific measurement(s) or description of the setting boundary where they are included on the aerial map; or if not specified, then;  
 b) the cadastral boundary at the nearest point to the setting boundary shown on the aerial maps  
 The boundaries should only be referred to in relation to these specific photos, not survey information or building plans. There may be a visual distortion due to the angle of the aerial photography.  
 District Plan rules do not apply for overlays extending into the Coastal Marine Area. The Coastal Marine Area is as defined in the Resource Management Act.

Heritage Item  
 Heritage Setting



Scale 1 : 2,488  
 Aerial photography captured in 2010  
 Published On: 14/10/2016

# Heritage Items and Settings Aerial Map

Aerial Map Reference: 16  
 Heritage Item Number: 535  
 Heritage Setting Number: 190

## 11.2.4 Heritage items: Fendalton Open Air Classroom



Heritage Item and Setting boundaries are a visual reference only as they have been captured against specific sets of aerial photography. The outer boundary of the setting is deemed to follow:  
 a) the specific measurement(s) or description of the setting boundary where they are included on the aerial map; or if not specified, then;  
 b) the cadastral boundary at the nearest point to the setting boundary shown on the aerial maps  
 The boundaries should only be referred to in relation to these specific photos, not survey information or building plans. There may be a visual distortion due to the angle of the aerial photography.  
 District Plan rules do not apply for overlays extending into the Coastal Marine Area. The Coastal Marine Area is as defined in the Resource Management Act.

 Heritage Item  
 Heritage Setting



Scale 1 : 461  
 Aerial photography captured in 2010  
 Published On: 16/07/2015

## 11.3 Campus comparisons

### 11.3.1 Monash University

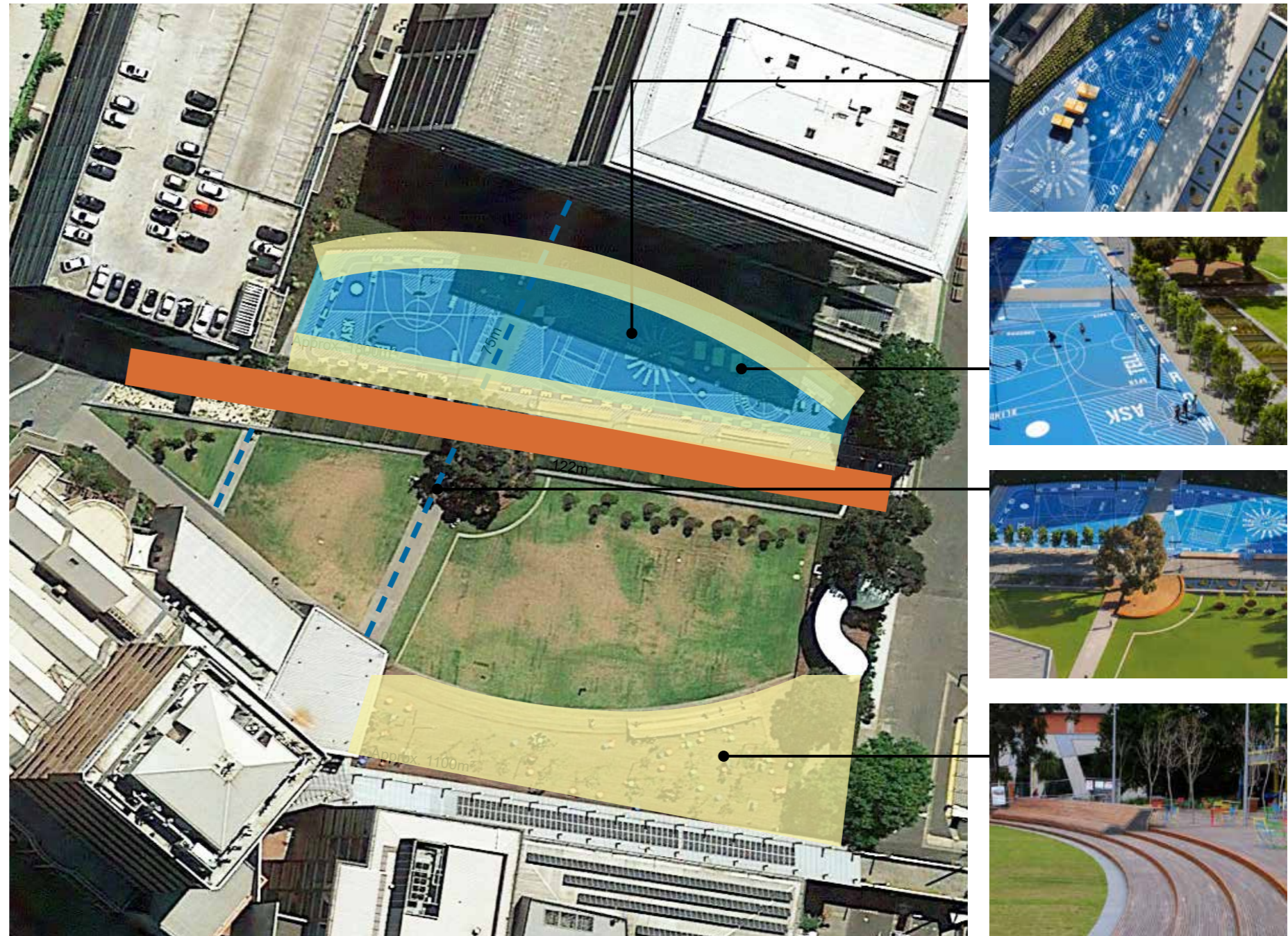
**Movement Typologies:**

- Primary Access (Pedestrian/Cyclists): Approx. 5m width
- Secondary Access Routes (Pedestrian): Approx. 3-4m width
- Shared Surface (Cars/Pedestrian/Cyclists)
- Slow/Congregational Spaces
- Mixed-surface sports facilities: Approx. 60m x 20m
- Plaza/entrance area



**Key Spatial Features:**

- Integrated Seating
- Spatial Planting
- Focal Centre
- Cycle Parking
- Water Feature



## 11.3.2 Colorado State University

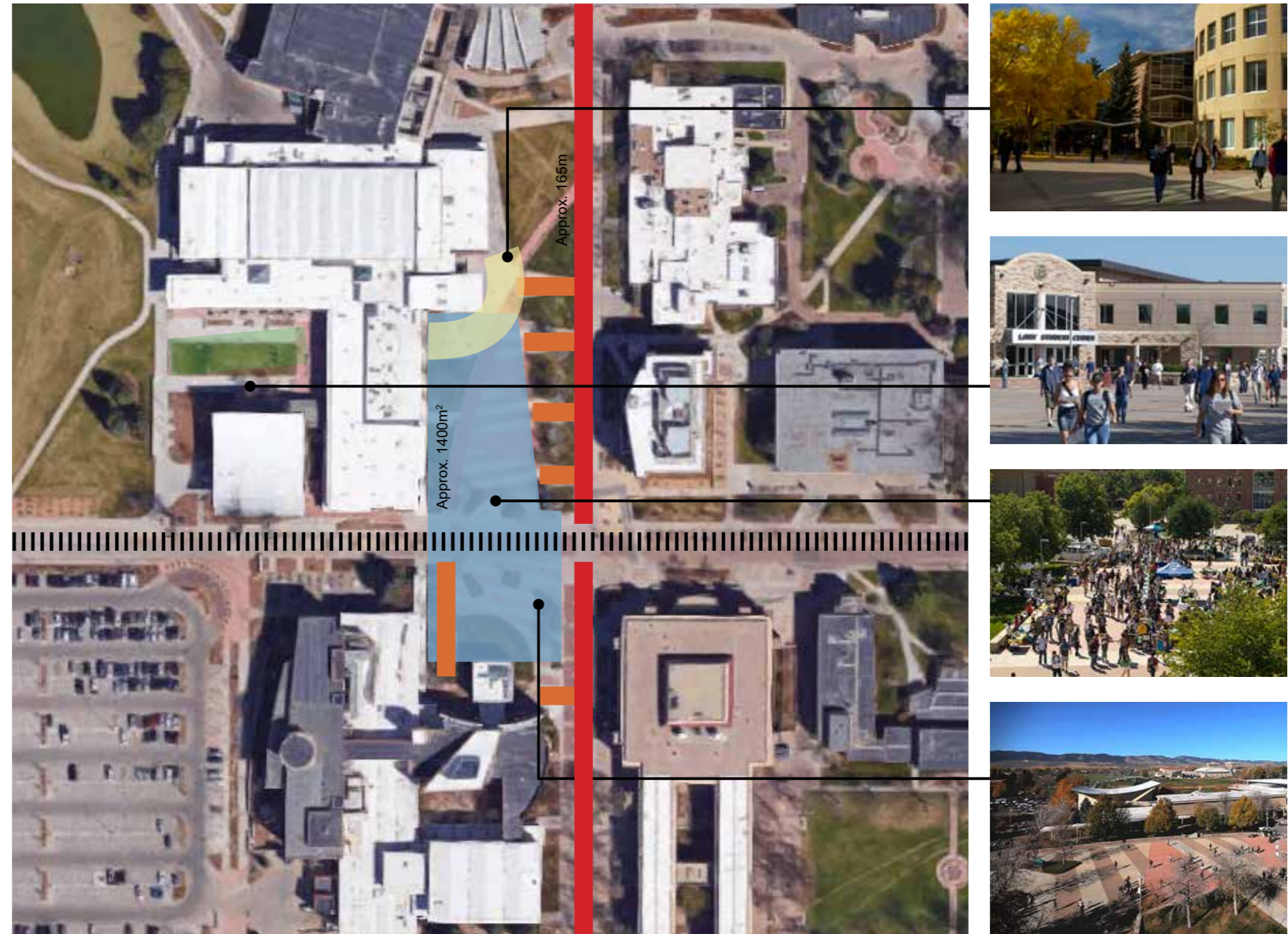
### Movement Typologies:

- Primary Access (Pedestrian/Cyclists): Approx. 8m width
- Secondary Access Routes (Pedestrian): Approx. 3-4m width
- Shared Surface (Cars/Pedestrian/Cyclists): Approx 10m width
- Slow/Congregational Spaces
- Mixed-surface sports facilities:
- Plaza/entrance area



### Key Spatial Features:

- Integrated Seating
- Spatial Planting
- Focal Centre
- Cycle Parking
- Water Feature



### 11.3.3 RMIT University

**Movement Typologies:**

- Primary Access(Pedestrian/Cyclists)
- Secondary Access Routes (Pedestrian): Approx. 3-4m width
- Shared Surface (Cars/Pedestrian/Cyclists): Approx 5m width
- Slow/Congregational Spaces
- Mixed-surface sports facilities: Approx. 40m x 50m
- Plaza/entrance area

**Key Spatial Features:**

- Integrated Seating
- Spatial Planting
- Focal Centre
- Cycle Parking
- Water Feature



### 11.3.4 University of Canterbury spaces in relation to relevant campus precedents



UC - OKEOVER LAWN

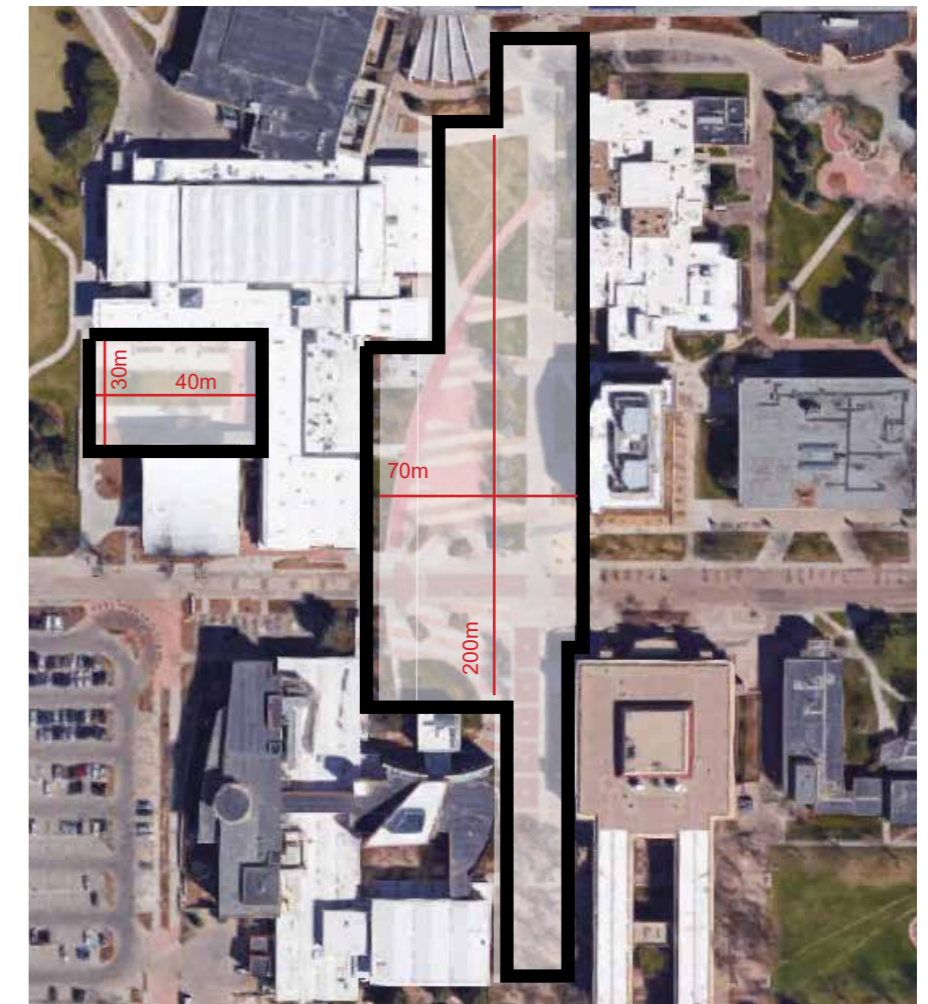


UC - C BLOCK LAWN



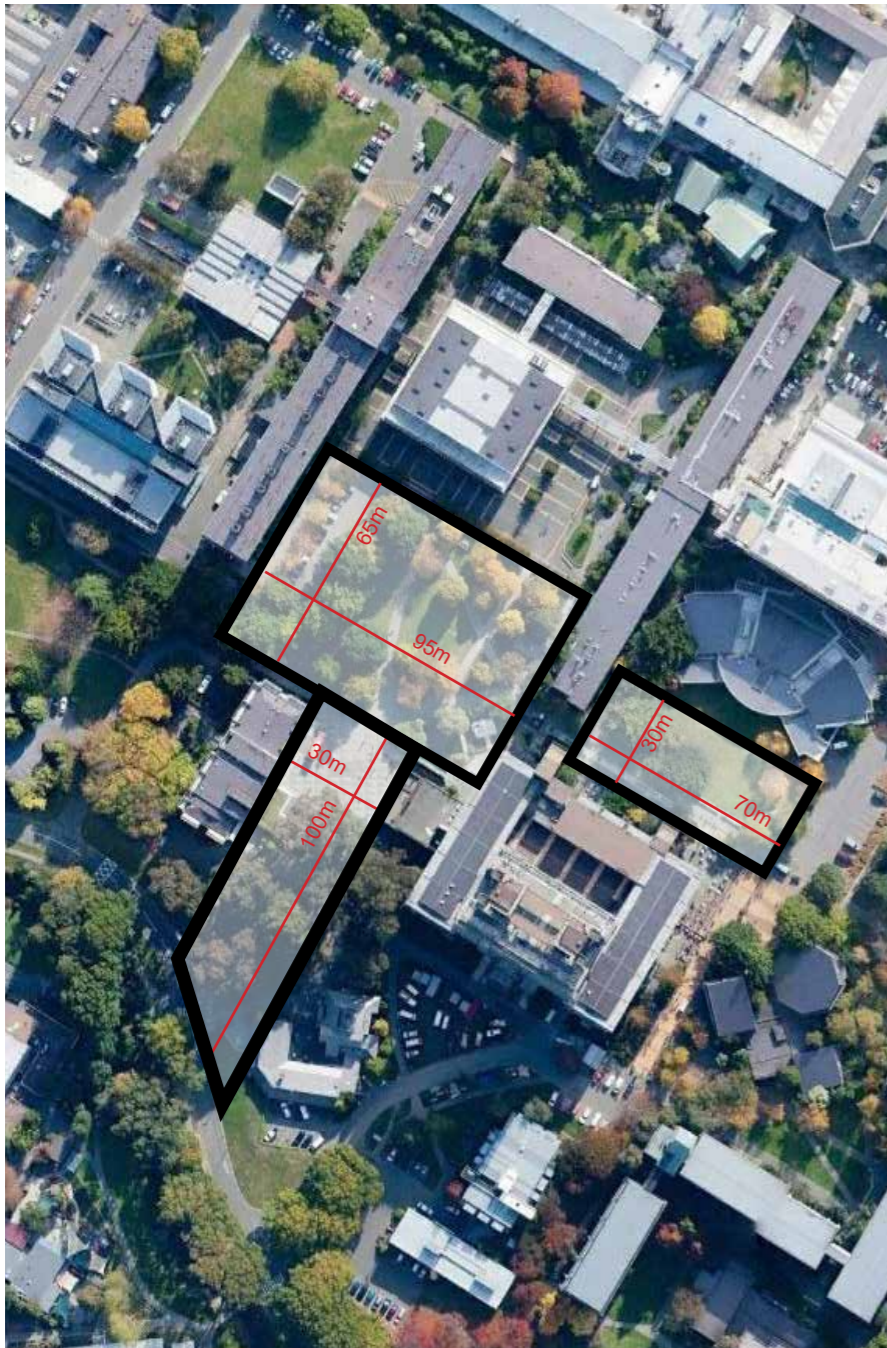
MONASH UNIVERSITY



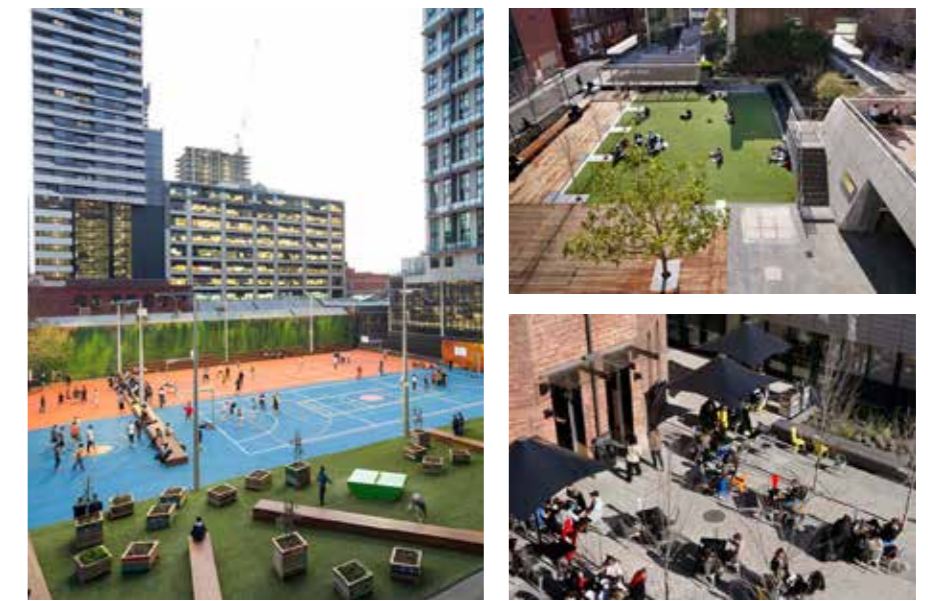


COLORADO STATE UNIVERSITY





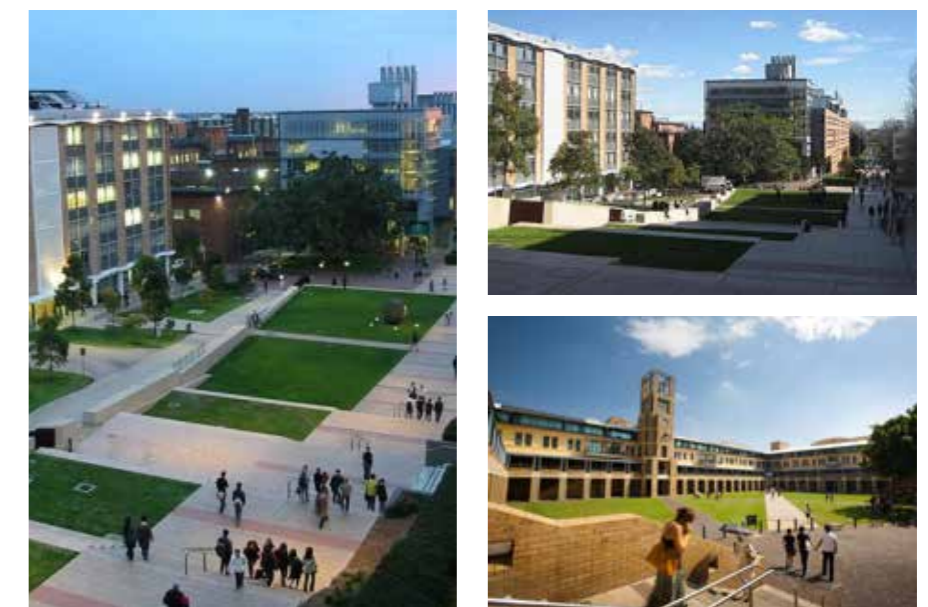
RMIT - URBAN SQUARE

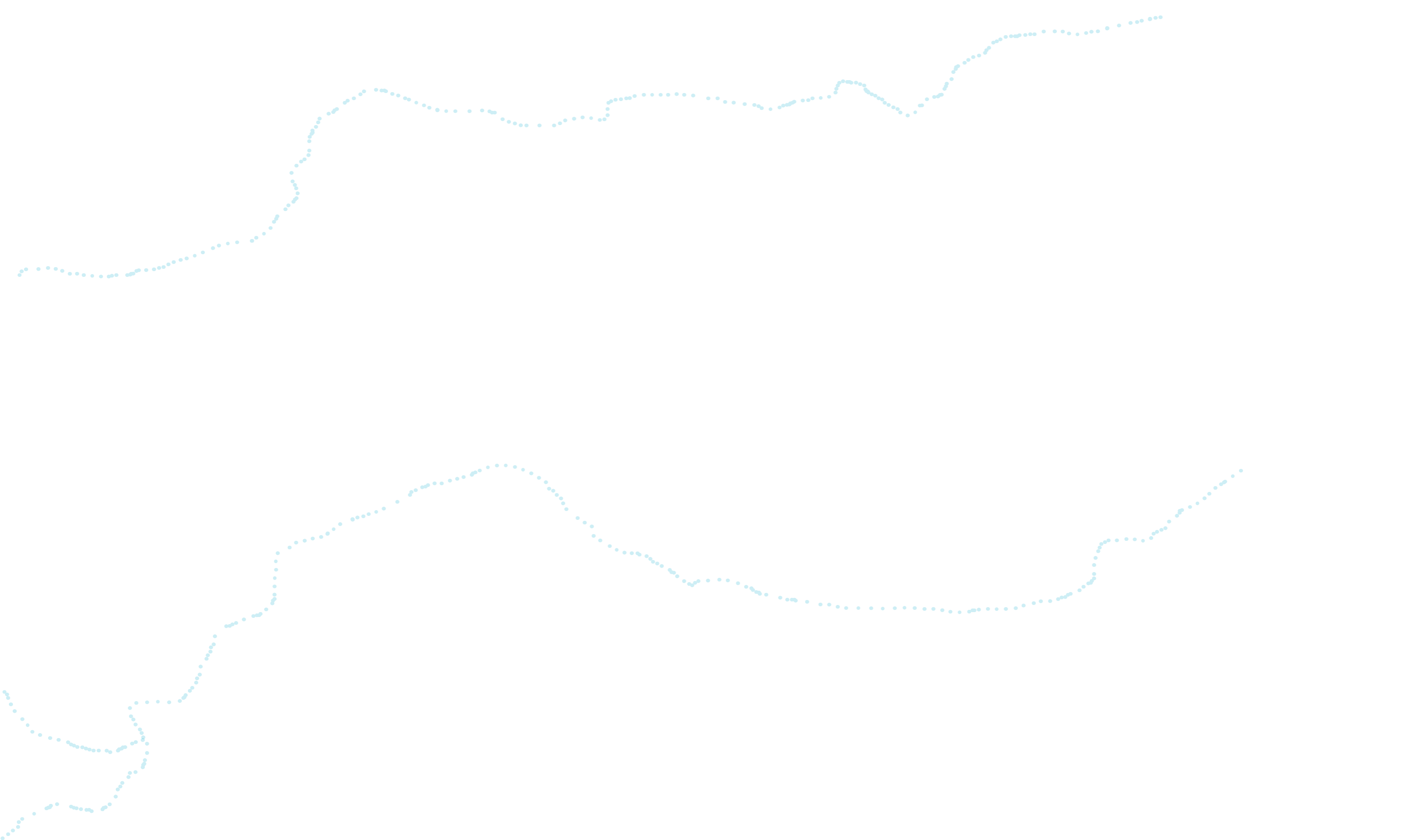


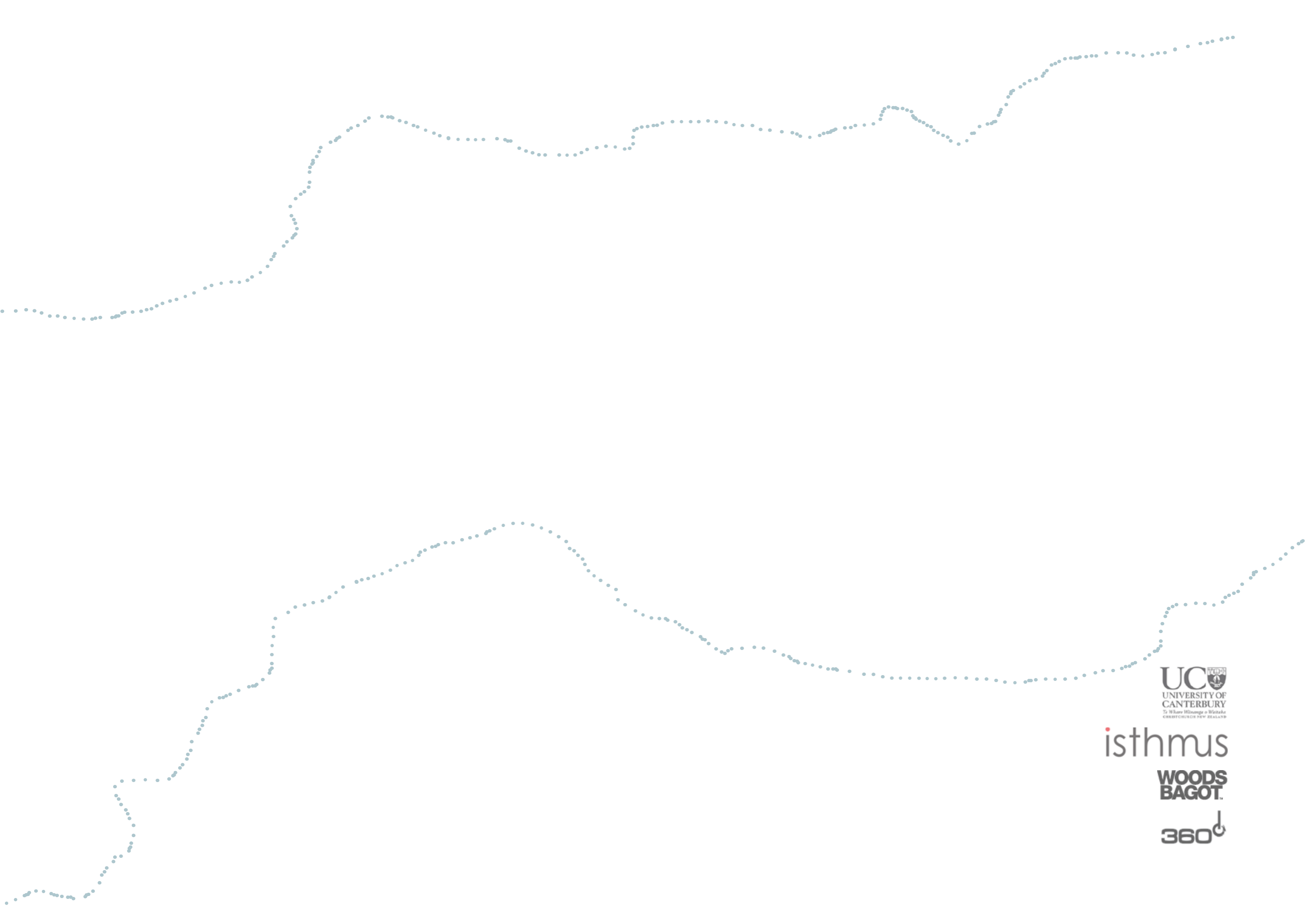




UNIVERSITY OF NEW SOUTH WALES







isthmus

WOODS  
BAGOT.

